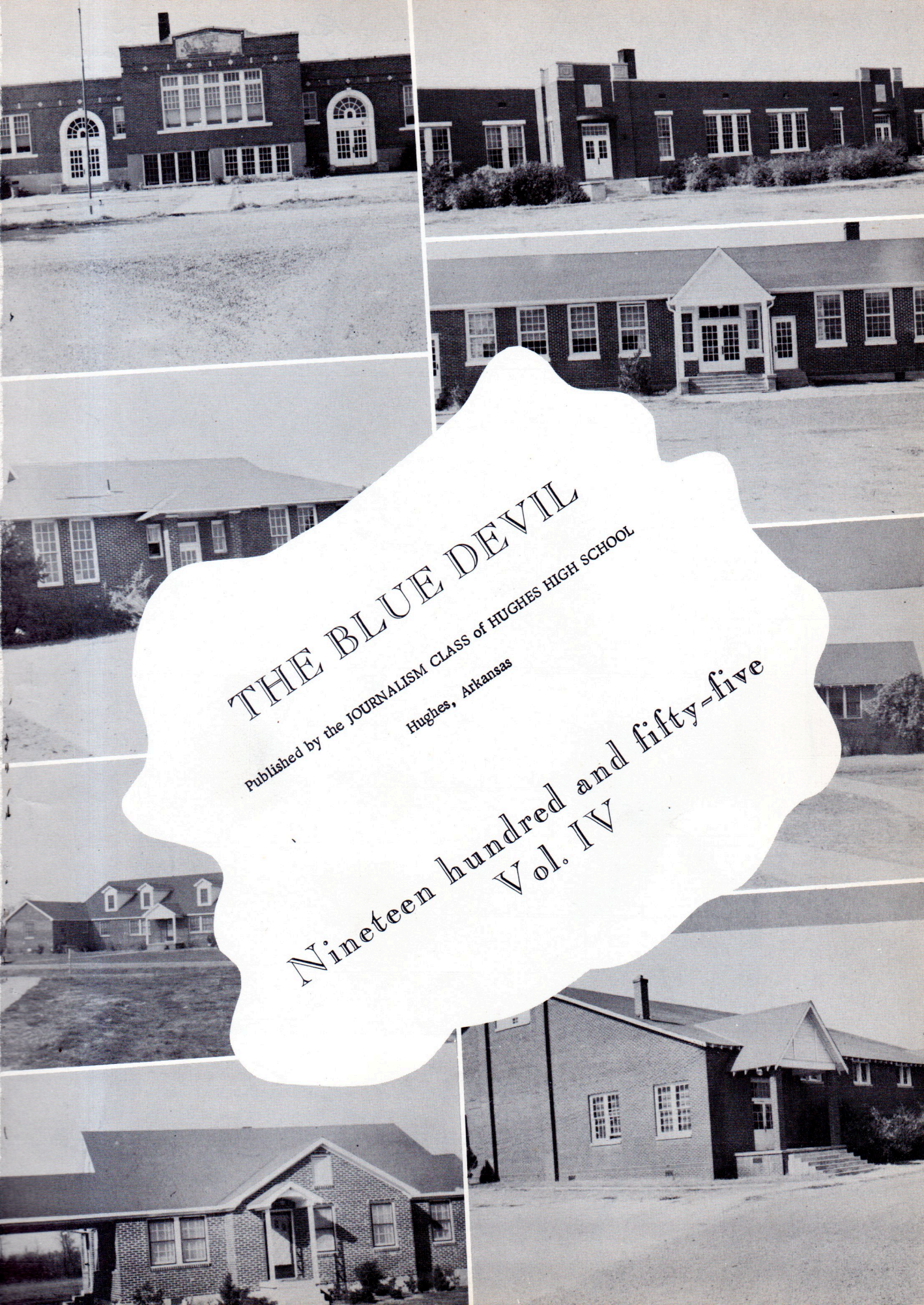


Fogel Island
1955
10th Grade



Morgan





THE BLUE DEVIL

Published by the JOURNALISM CLASS of HUGHES HIGH SCHOOL
Hughes, Arkansas

Nineteen hundred and fifty-five
Vol. IV

Best of luck to a
Geometry pal. Always
stay as sweet as you
are new!



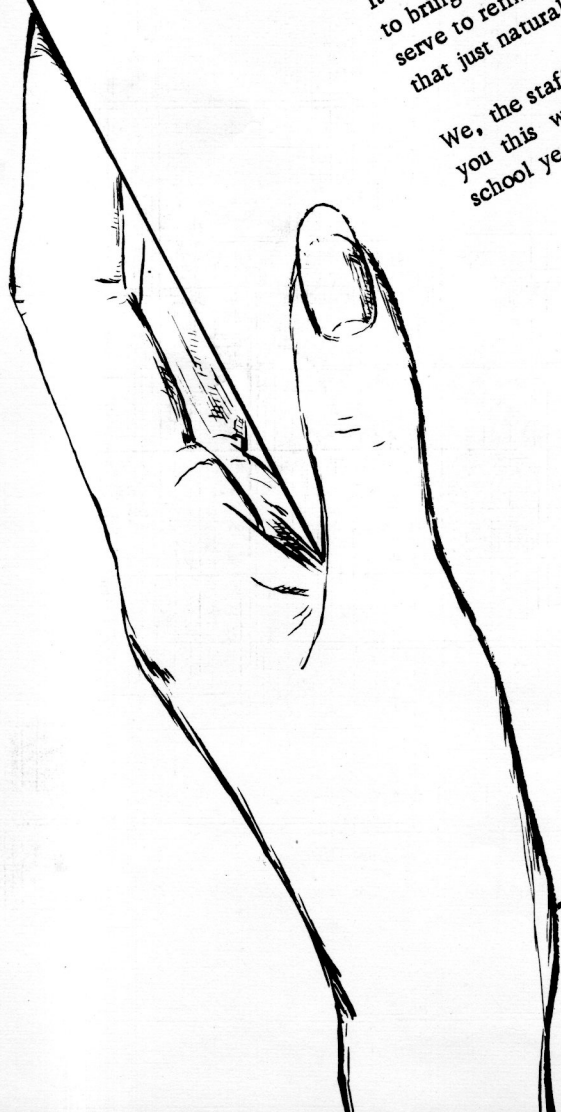
Southern,
Beverly

It has been the purpose of the BLUE DEVIL staff
to bring to you a book that in future years will
serve to remind you of all the exciting things
that just naturally happen when you are young.

We, the staff of the 1955 BLUE DEVIL, hand to
you this written and pictorial record of the
school year, 1954-55.

Here you will find

- FACULTY
- ORGANIZATIONS
- SENIOR HIGH
- FEATURES
- JUNIOR HIGH
- ATHLETICS
- ELEMENTARY
- ADVERTISING



*Best of Luck,
Don Meador*

DEDICATION



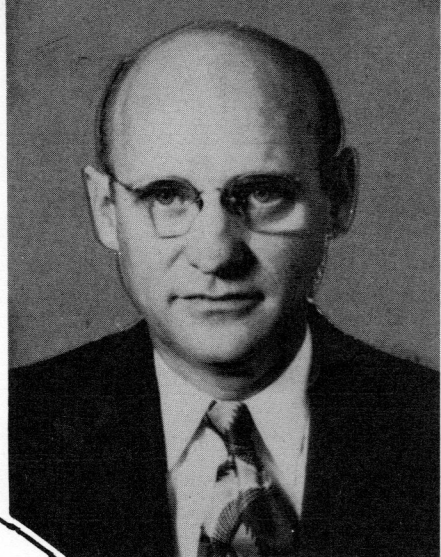
Coach Don Meador is respected by all students. He is both a coach and a teacher. We commend him for his fine coaching record both in football and basketball. We learn under his guidance, and we admire the high standards which he sets. We try to live up to these at all times. We, the students of HHS, are proud to honor him and to have him as a part of our school.

THE WHEELS

of

Hughes Special School District No. 27

O. E. WORRELL
Principal
High School



BERT C. PONCEY, JR.
President of School Board

C. A. NICKLE
Vice President

CHARLES ADAMS
Secretary



E. H. CLARKE

SIMON CAPPS



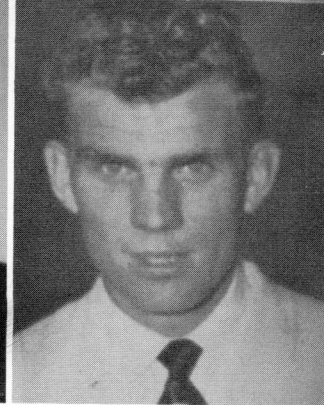
CLARA MOSES
Principal
Elementary School

The hub of our school system is our Superintendent, Roy M. Nelson. Without him many of our undertakings would fail. He keeps our wheel revolving in the right direction.

FACULTY OF HUGHES HIGH SCHOOL

C. E. BULL
B.S.A., University of Arkansas

JAMES H. CLARK
B.S.E., Arkansas State Teachers

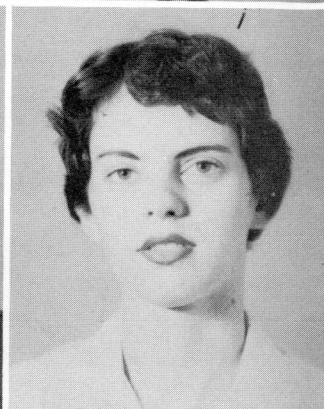


*Best wishes
Mary
Clark*

MARY S. CLARK
B.S.E., Arkansas A & M

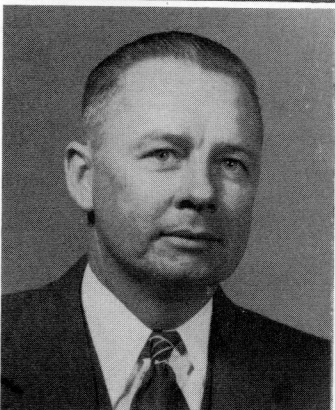
CAROLYN HAYNES
B.S.E., Arkansas State Teachers

*To a very lovely
student - best wishes!
Carolyn Haynes*



KERMIT HINESLEY
M.A., George Peabody College

JULIA McKEMIE
M.A., George Peabody College



DON MEADOR
B.A., Ouachita College

MRS. ROY NELSON
B.S.E., Arkansas State Teachers



*Nice, quiet students are
always a joy
Annie Ruth
Sample*

ANNIE RUTH SAMPLE
M.A., George Peabody College

MRS. O. E. WORRELL
B.S., Memphis State

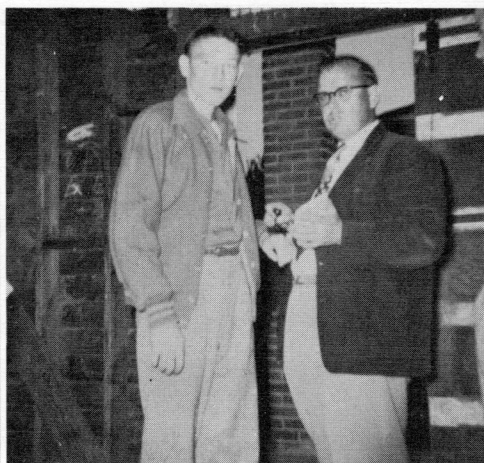


No picture:
MILTON STEELE
B.S.E., University of Mississippi

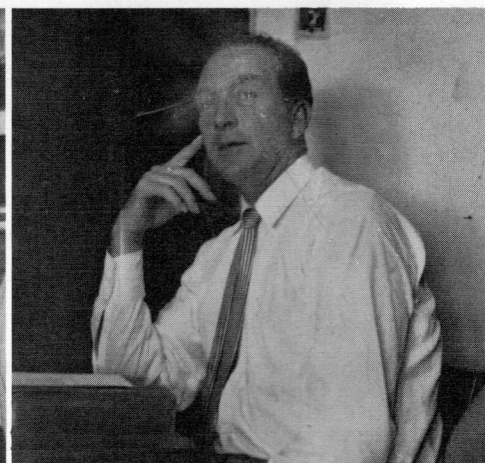
FACULTY AT WORK



Haynes at home economics



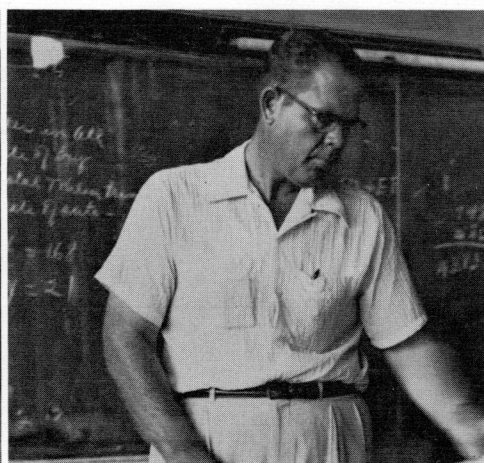
Bull at ball game



Steele in classroom



Worrells with Glee Club



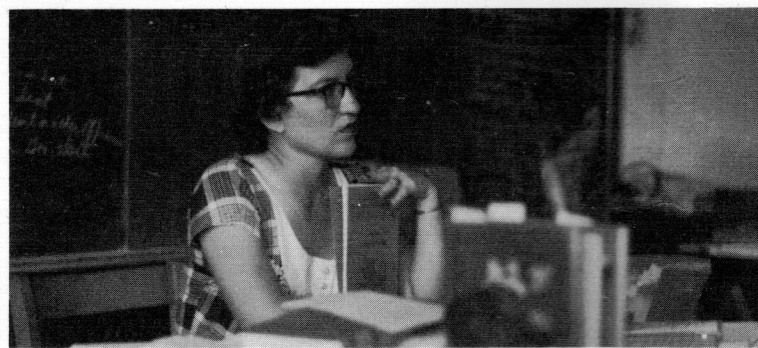
Meador in math



Hinesley checking bus route



Clark checking papers



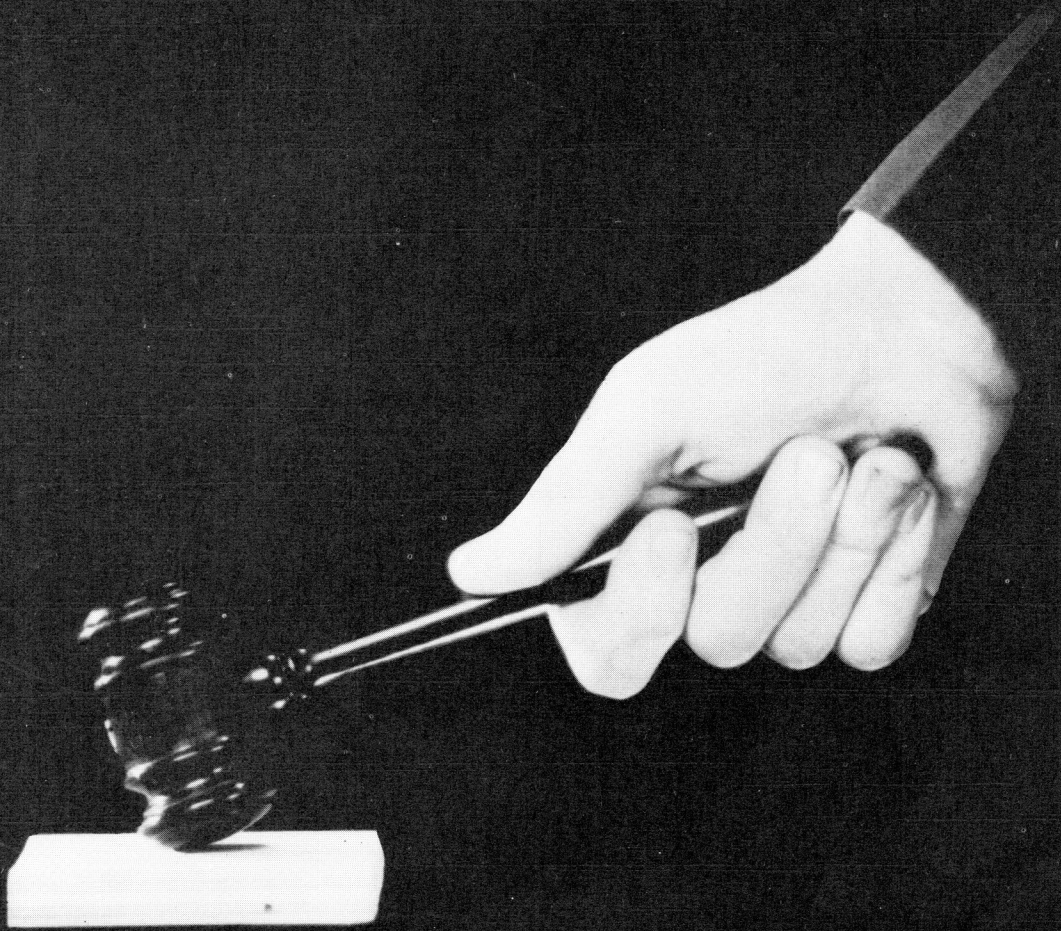
Sample with English class



McKemie with typing



Clark with angles



ORGANIZATIONS

WITH SERVICE TO SCHOOL

AS THEIR FIRST THOUGHT

THESE ARE

STUDENT COUNCIL

MEMBERS . . .

- Elizabeth Adams
- Betty Rea Allen
- Steve Bernard
- Jack Burch
- Charlotte Burchfield
- Bessie Lynn Chamblee
- Barbara McHism
- John Russell Collier
- Diane Davis
- Mayo Fong
- Laurel Fong
- Hing Fong
- Ann Harrison
- Teddy Harrison
- Fairy Ann Meurrier
- Harvey Reisman

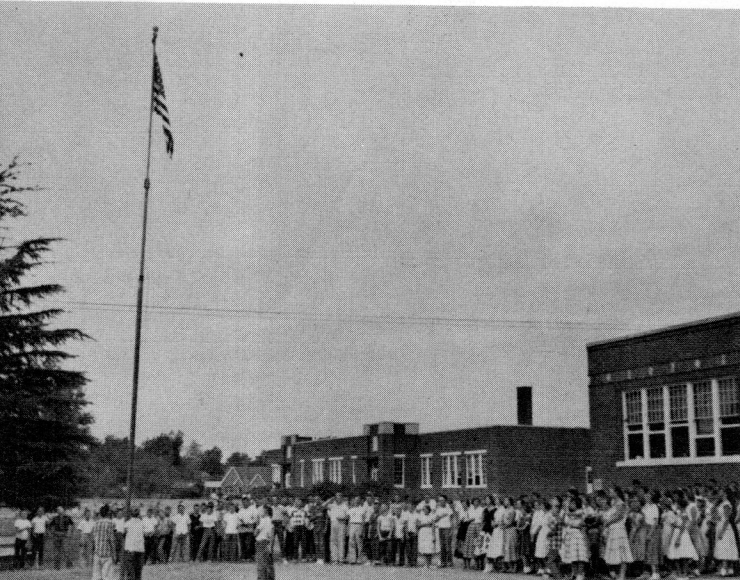


PROJECTS

Our projects can be listed as Service to school, Cooperation with community, Work toward school citizenship, and a sound financial program. Among our activities we include an awards system, observance of special days, observance of special weeks, cooperation with community drives, encourage "Go-to-Church" days, and keeping a school scrapbook.

OFFICERS

- President - - - - - Ann Harrison
- Vice President - - - - - Teddy Harrison
- Secretary - - - - - Mayo Fong
- Treasurer - - - - - Betty Rea Allen
- Reporter - - - - - Barbara Chism



Our school observes World Citizenship Day





OFFICERS

- President - - - - - Mayo Fong
- Vice President - - - - - Betty Rea Allen
- Secretary - - - - - Ping Shong Fong
- Treasurer - - - - - Tommy Brist
- Reporter - - - - - Ann Harrison
- Historian - - - - - Barbara Chism
- Parliamentarian - - - - - Tommy Coldren
- Sponsor - - - - - Miss Annie Ruth Sample

PROUDLY WE PRESENT TO YOU OUR CLUB
FOR HONOR STUDENTS.....

THE BETA CLUB

This is a non-secret-achievement club for students of senior high schools. Its purpose is to promote honesty, service, and leadership. Beta is a Greek letter, and it means "life."

Projects are selling Christmas and occasional cards, giving to National Education Fund, giving basket to needy, sending magazines to sanatorium, and awarding banner to class with the most honor students at the end of year.



Members: Betty Rea Allen, Tommy Beene, Steve Bernard, Tommy Brist, Beverly Brown, Barbara Chism, Tommy Coldren, John Russell Collier, Charles Collum, Melvin Creekmore, June Downs, Jeannie Fong, Mayo Fong, Ping Shong Fong, Ann Harrison, Sara Lou Hassell, Clary Lunsford, Doris McCollum, Joyce Odom, Raiford Pittman, Harvey Reisman, Carolyn Sorrels, Bonnie Tilley, George Young.



Some of our boys are interested in learning to be farmers. They participate in the....

F.F.A.

OFFICERS

President - - - - - William Harris
 Vice President - - - - - Bobby Medlin
 Secretary - - - - - George Young
 Sentinel - - - - - Horace Drennan
 Reporter - - - - - Randle Griggs
 Advisor - - - - - Steve Bernard
 Treasurer - - - - - Hugh Monty Dillahunty

MOTTO: Learning to do
 Doing to learn
 Earning to live
 Living to serve.

AIM: Development of agriculture, leadership,
 cooperation, and citizenship.

MEMBERS: Thomas Able, Byron Ashby, Jimmy Babb, Larry Beene, Wayne Beene, Steve Bernard, George Brannon, Clyde Barrow, Leslie Chrestman, Richard Chrestman, Howard Chism, Johnny Collier, John Russell Collier, Charles Collum, Delbert Creekmore, Thomas Cupples, Victor Cupples, Hugh M. Dillahunty, Horace Drennan, Bobby Estes, Aaron Franks, Emmett Gadberry, James "Bo" Gattis, Bill Goacher, Charles Gregg, Bobby Griggs, Randle Griggs, William "Red" Harris, Bill Hooker, Neil Hopper, Sherald Jones, Robert Knighton, Robert Little, Clary Lunsford, Jerald Malone, Jerry McMillion, Bobby Medlin, Kuhron Meurrier, Robert Miller, Curtis Moore, Jerry Presley, Louis Perez, William Reidhard, Lynn Sanders, Robert Selph, Jack Shidler, Jimmy Shull, James Smith, Robert Stoddard, Hoyt Spencer, Johnny Walton, Bill White, George Young. Advisor, C.E. Bull.





OFFICERS

- President - - - - - Doris McCollum
- First Vice President - - - - - Betty Rea Allen
- Second Vice President - - - - - Shirley Moore
- Secretary - - - - - Barbara Chism
- Treasurer - - - - - Jeannie Fong (not present)
- Historian - - - - - Elizabeth Adams
- Reporter - - - - - Carolyn Sorrels (not present)
- Parliamentarian - - - - - Beverly Tate

SOME OF US ARE INTERESTED IN HOMEMAKING
WE ARE.....

THE F.H.A.

- We Promote:
- Appreciation of the joys and satisfaction of homemaking
 - Worthy home membership
 - Democracy in home and community
 - Good home and family life for all
 - International good will
 - Development of creative leadership in home and community
 - Wholesome individual and group recreation
 - Interest in home economics



Members: Elizabeth Adams, Betty Allen, Shirley Atkinson, Gayle Austin, Betty Baker, Joyce Beene, Margaret Beene, Martha Beene, Beverly Brown, Bobbie Carey, Martha Carey, Patsy Chadwick, Bessie Lynn Chamblee, Barbara Chism, Joyce Cordell, Jan Doss, June Downs, Betty Elliott, Yvonne Estes, Hing Fong, Jeannie Fong, Mayo Fong, Ping Shong Fong, Shirley Goodman, Glenda Griggs, Mary Ann Hammock, June Harmon, Ann Harrison, Sara Lou Hassell, Yvonne Hood, Lanell Hopper, Joyce Johnson, Shirley Lewis, Doris McCollum, Patsy McIntyre, Margaret McKenzie, Sherry McMillion, Betty Medlin, Fairy Ann Meurrier, Clara Moore, Shirley Moore, Joyce Odom, Shirley Paris, Vernell Quarles, Gail Selph, Carolyn Sorrels, Lela Stiles, Barbara Stimpson, Beverly Tate, Bonnie Tilley, Charlene Vest, Patsy White, Vivian White, Faye Wright.

We find the

PEARL RUSSWURM F.T.A.

in our school is a group of students who have an eye on their future.



- President - - - - - June Downs
- Vice President - - - - - Ping Shong Fong
- Secretary - - - - - Betty Rea Allen
- Treasurer - - - - - Elizabeth Adams
- Reporter - - - - - Shirley Moore
- Historian - - - - - Lanell Hopper
- Parliamentarian - - - - - Bonnie Tilley
- Song Leader - - - - - Beverly Brown
- Pianist - - - - - Ann Harrison
- Sponsors - - - - - Mrs. Earl J. Clark
Miss Carolyn Haynes, Mr. Milton Steele



MEMBERS: Ping Shong Fong, June Downs, Mayo Fong, Beverly Brown, Martha Carey, Gail Austin, Vivian White, Ann Harrison, Vernell Quarles, Annie Kelley, Gail Selph, Faye Wright, Doris McCollum, Bonnie Tilley, Yvonne Hood, Elizabeth Adams, Betty Rea Allen.

Many of us like to sing. For us the...

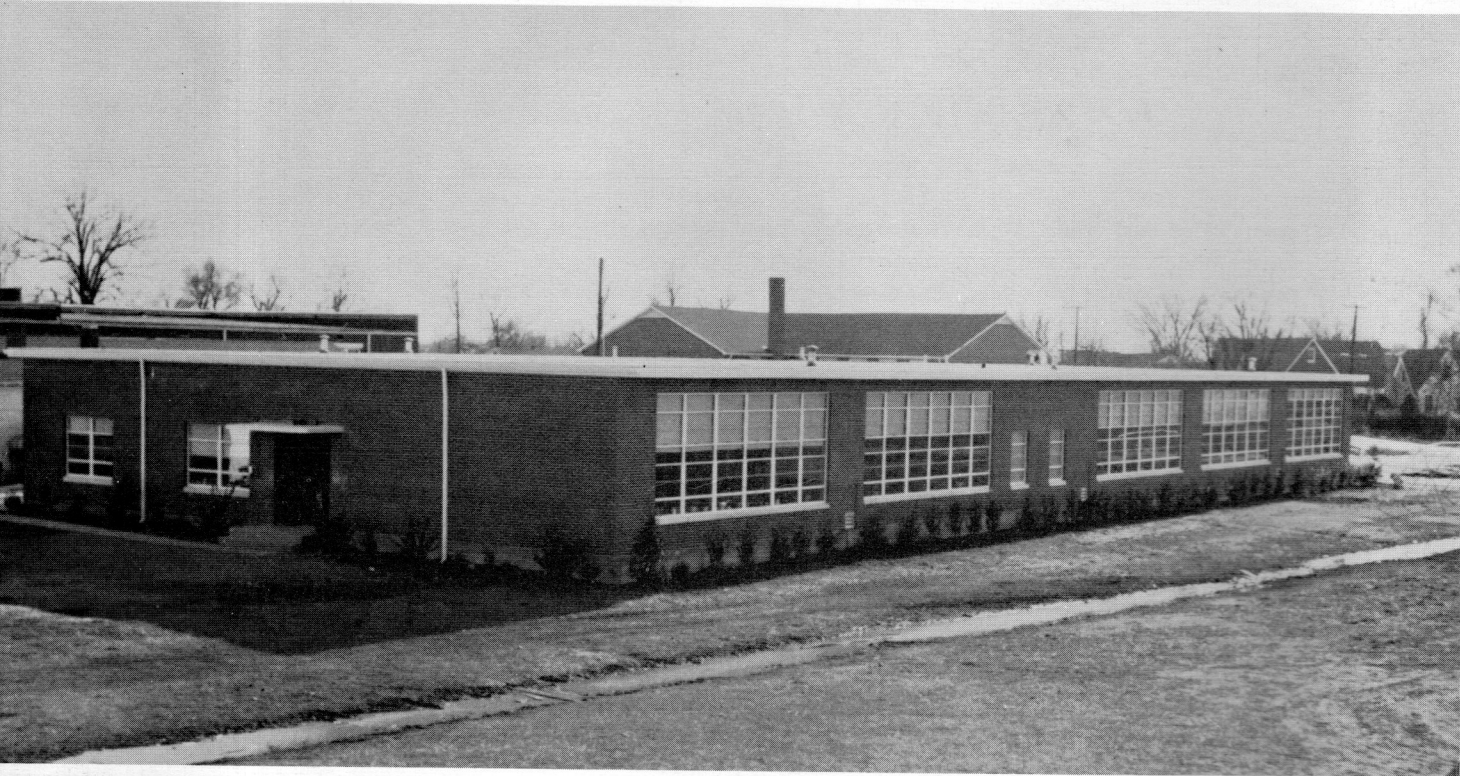
SENIOR HIGH GLEE CLUB

meets twice each week. We have an opportunity to appear before student groups, in assembly, at PTA, for the civic clubs, and on numerous occasions. Our Christmas music is always interesting and our programs are varied each year. Our directors are Mr. and Mrs. O. E. Worrell.

Our members are Elizabeth Adams, Betty Rea Allen, Shirley Atkinson, Joyce Beene, Tommy Beene, Steve Bernard, George Brannon, Tommy Brist, Beverly Brown, Olivia Boyd, Bobbie Sue Carey, Martha Carey, Patsy Chadwick, Bessie Lynn Chamblee, Barbara Chism, John Russell Collier, Joyce Cordell, Hugh Monty Dillahunty, Jan Doss, June Downs, Betty Jean Elliott, Hing Fong, Jeannie Fong, Mayo Fong, Ping Shong Fong, Shirley Goodman, Glenda Griggs, Mary Ann Hammock, Ann Harrison, Teddy Harrison, June Harmon, Sara Hassell, Lanell Hopper, Joyce Johnson, Annie Kelley, Shirley Lewis, Austin Littell, Doris McCollum, Patsy McIntyre, Margaret McKenzie, Sherry McMillion, Patsy Mealer, Fairy Ann Meurrier, Clara Moore, Curtis Moore, Shirley Moore, Joyce Odom, Theresa Perez, Raiford Pittman, Vernell Quarles, Omijean Reeves, Harvey Reisman, Emma Scrape, Gail Selph, Barbara Stimpson, Betty Stimpson, Carolyn Sorrels, Beverly Tate, Dovie Taylor, Bonnie Tilley, Charlene Vest, Faye Wright.



Our newest building and one of which we are especially proud is



THE CAFETORIUM

This year we are able to eat our school lunches in a modern cafetorium where we find well-balanced meals served each day. This building is also at the disposal of the community and several civic clubs meet here each week. It is also the setting for most community dinners. The person to whom we owe a great deal is our lunchroom supervisor, Mrs. Roy M. Nelson. It is never too early nor too late for her to be available to help. We would like to pay tribute to her for the many kind deeds she does so that our work will be easier and more entertainments better. Thanks.



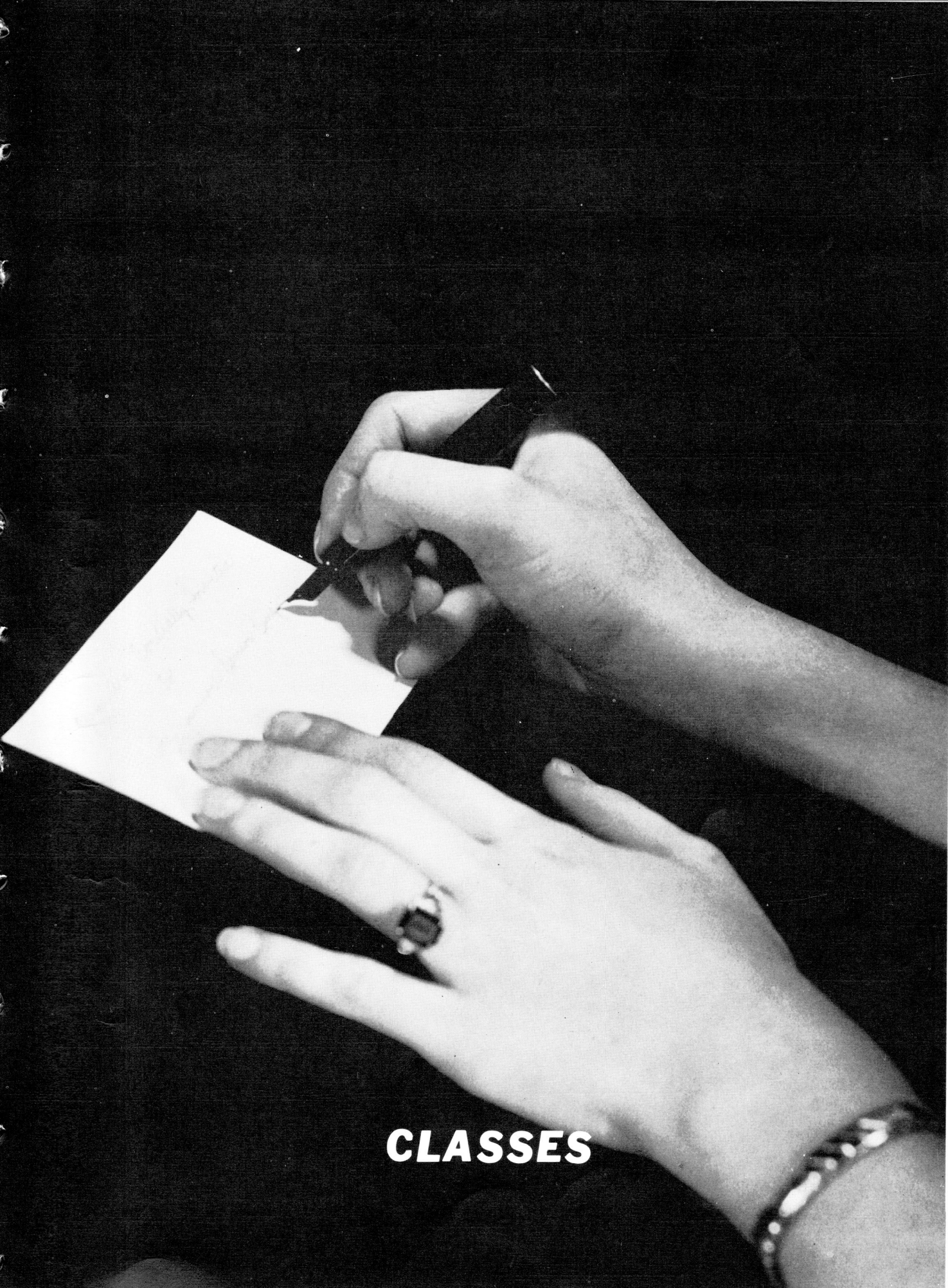
Mrs. Nelson



We enjoy our school lunches



And reluctantly return to the classroom after noon.



CLASSES

SENIORS

RAIFORD PITTMAN

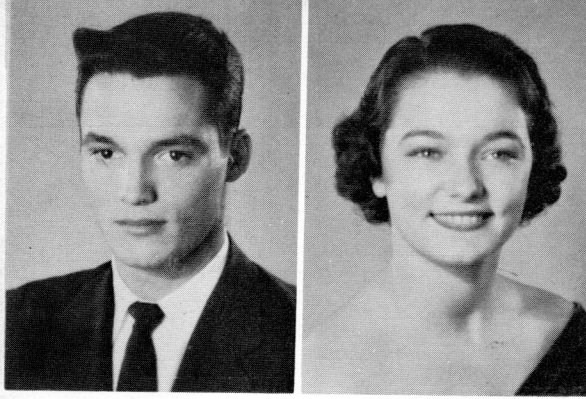
Senior President, Boys' State, Beta Club 2, Glee Club 1, FFA 3, Football 2.

"A smile costs nothing, but it's worth a million dollars."

JUNE DOWNS

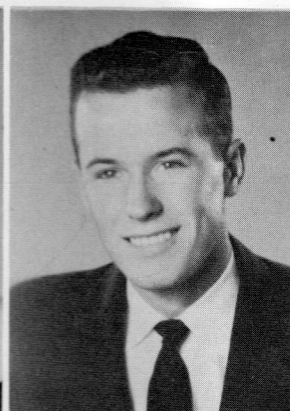
FHA 4, FTA 2, Glee Club 4, Beta 3, FFA Sweetheart 1, Who's Who 2, Yearbook Beauty 3, Cheerleader 4, Girls' State.

"Live wires never get stepped on."



President - - - - - RAIFORD PITTMAN
 Vice President - - - - - JUNE DOWNS
 Secretary - - - - - MAYO FONG
 Treasurer - - - - - BETTY REA ALLEN
 Reporter - - - - - RANDLE GRIGGS
 Parliamentarian - - - - - SHIRLEY LEWIS

*You are my joy
 the sweetest girl
 I know. I'll
 always remember
 to you. Best
 love
 Mayo*



MAYO FONG

Beta Club 4, Student Council 1, Basketball 4, Halloween Queen, Babe Ruth Award 1, FHA 4, Glee Club 4, FTA 2.

"With an eye to the future."

BETTY REA ALLEN

Basketball 3, FHA 4, FTA 3, Glee Club 4, Student Council 4, Beta 4; Girls' State, DAR Good Citizen, President Inter-City.

"Don't itch for success, scratch for it."

RANDLE GRIGGS

FFA 3, Football 4, FTA 1, Basketball 1.

"Love me little, love me long."

THOMAS ABLE
FFA 4, Football 4, Track 2, Basketball 2.
"Be what you are and not what you want to be."

BYRON ASHBY
FFA 4, Track 1, Football 2, Basketball 1.
"Live only for today for tomorrow you may die."

BEVERLY BROWN
Editor of BLUE DEVIL, FTA 1, FHA 1, Beta Club 1,
Transfer from Jonesboro National Honor Society 1,
Junior Red Cross Council, District Band 1, Orchestra
1, Latin Club 1.
"Nothing impossible--it just takes a little longer."

MARTHA CAREY
Glee Club 4, FHA 4, FTA 2, Yearbook Beauty 1,
Royalty 2, Basketball 2.
"What we anticipate seldom occurs; what we least
expect generally happens."

CRAFTON DUNAVENT
FFA 1.
"E Pluribus Unum" one out of many.

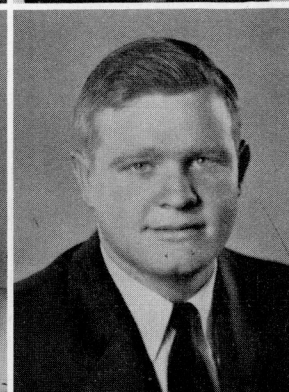
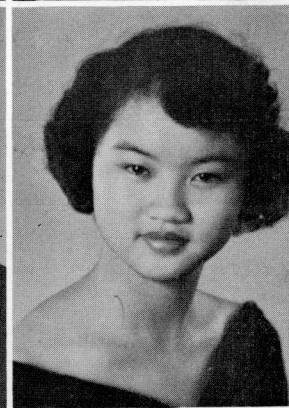
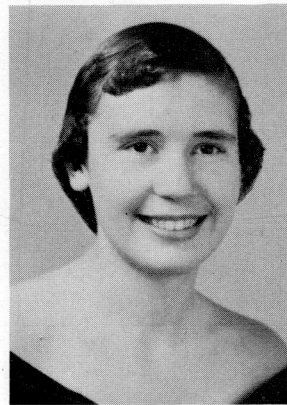
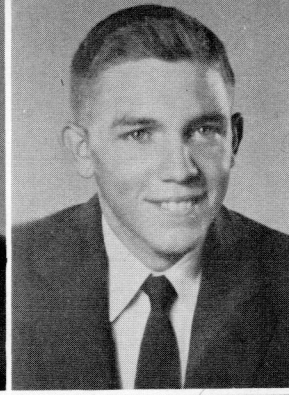
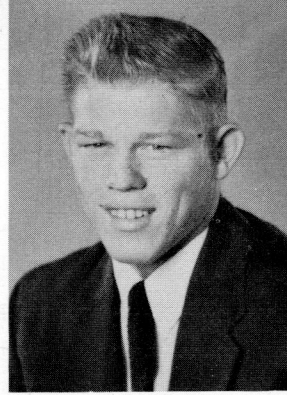
PING SHONG FONG
Beta 4, Glee Club 4, FHA 4, FTA 2, Student Council
3, Who's Who 2, Editor of Paper 1, Home Economics
Award 2, District Historian FHA.
"I have often regretted my speech, never my silence."

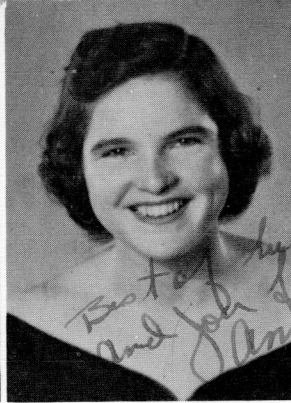
CHARLES GREGG
FFA 4, Boys' State 1.
"Wedding is destiny and hanging likewise."

JUNE DOLORES HARMON
FTA 1, Glee Club 3, FHA 3, Feature Editor, Basketball
Manager 1, FHA State Conference 1.
"A hard worker, but hardly works."

ANN HARRISON
President Student Council, Beta 4, Glee Club 4, FTA
3, FHA 4, Who's Who 1, Girls' State 1, Homecoming
Queen 1, Cheerleader 3, Basketball 4.
"Pretty is as pretty does."

WILLIAM HARRIS
Football 3, FFA 4, FFA President 1.
"The life of the party."





*Best girl - back to a wonderful
Gloria - same fun in life.
Love
Gloria Lanell*

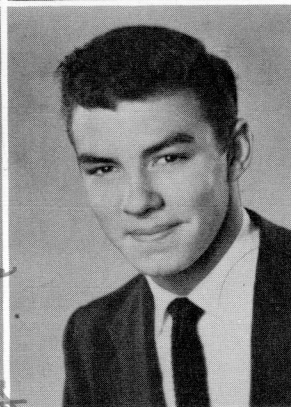
GLORIA LANELL HOPPER
FTA 2, FHA 4, Glee Club 4, Paper Staff, Trio 3,
4-H Club 2.

"Be big enough to be little enough to be really big."

*Best of luck
and job forever
Annie*

ANNIE LEE KELLEY
FHA 4, FTA 1, Glee Club 4, Basketball 1.

"Onward ever, backward never."



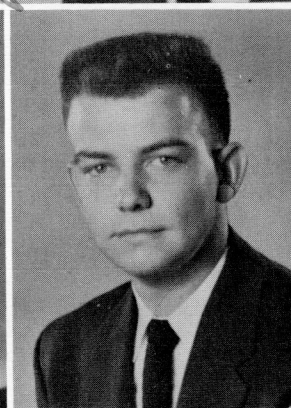
SHIRLEY LEWIS
Glee Club 4, FTA 2, FHA 4.

"While we stop to think, we often miss our opportunity."

EDWARD AUSTIN LITTELL
FFA 3, Football 2, Track 2, 4-H Club 8.

"Rule the Roost." *I'll always remember
your smiling face, lots of luck,
Austin Littell*

*Get your ends
of happiness
I love*

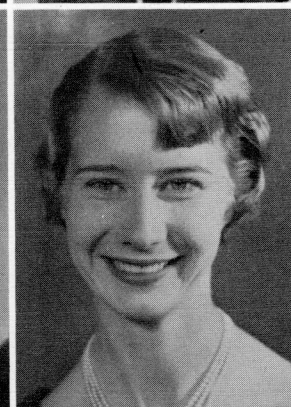


DORIS JANE MCCOLLUM
FHA 3, FTA 2, Cheerleader 1, Basketball 2, Beta 3,
FHA Conference 1, Trio 3.

"To strive, to seek; to find, but not to yield."

JERRY PRESLEY
FFA 3, Key Club 1, Tide Club 1.

"If I ever needed knowledge, I need it now."



LEE VERNELL QUARLES
FTA 2, FHA 4, Glee Club 4, Homecoming Royalty 2,
Basketball 4.

"Live everyday as if it were your last."

LAVONDA LOUISE SANFORD
Glee Club 4, FTA 1, FHA 2.

"Even a single hair casts its shadow."

*To a sweet girl
I enjoyed being in
P.E. with you this
year.
Love!
Lavonda*



ROBERT STODDARD
FFA 3, Football 2.

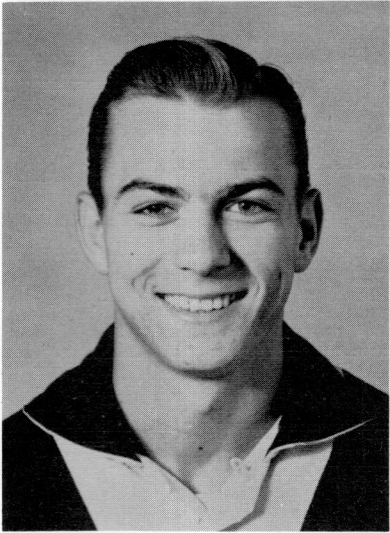
"A clear conscience is a sure card."

FAYE WRIGHT
FHA 4, Glee Club 3, FTA 1, Paper Staff 1.

"A smile goes a long way."

*Joyce It has been a
pleasure
knowing you.
Lots of luck Love
Faye*

JUNIORS



BOBBY MEDLIN
President



We selected
ELIZABETH ADAMS
and **TOMMY BRIST**
to represent us at
Halloween.

- President - - - - - **BOBBY MEDLIN**
- Vice President - - - - - **CAROLYN SORRELS**
- Secretary - - - - - **TOMMY COLDREN**
- Treasurer - - - - - **MARY ANN HAMMOCK**
- Sentinel - - - - - **HORACE DRENNAN**
- Reporter - - - - - **STEVE BERNARD**
- Parliamentarian - - - - - **TOMMY BEENE**





ELIZABETH ADAMS



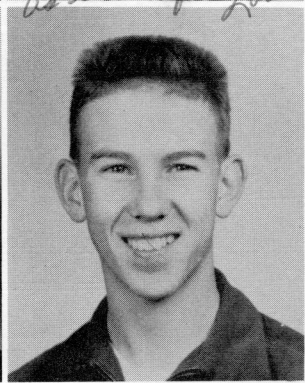
GAYLE AUSTIN



BETTY BAKER



CAREY BECK



TOMMY BEENE

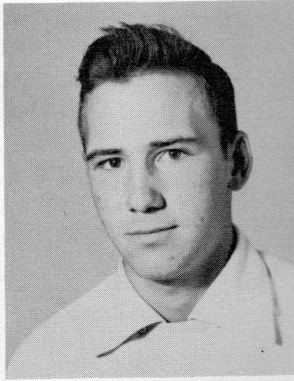


MARGARET BEENE

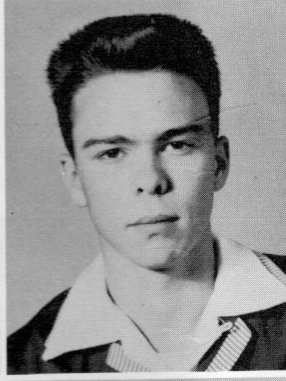
STEVE BERNARD



TOMMY BRIST

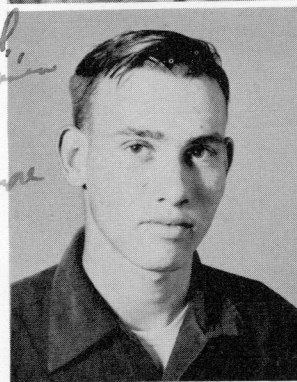


TOMMY COLDREN



*Here's wishing that you do the world a much good of you love go school. Love of love and happiness
Melvin Creekmore
Melvin Creekmore*

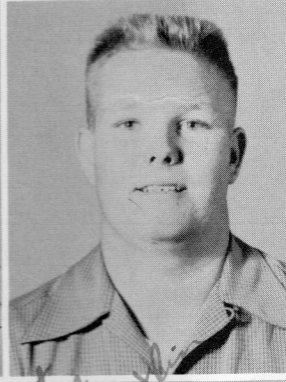
MELVIN CREEKMORE



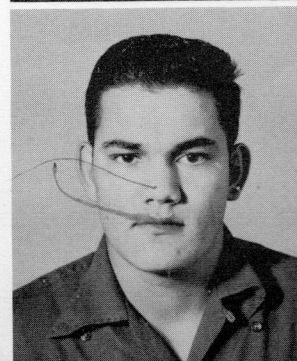
THOMAS CUPPLES



HUGH MONTY DILLAHUNTY



HORACE DRENNAN

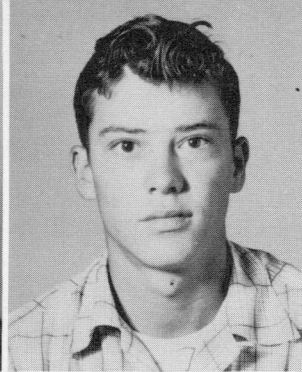
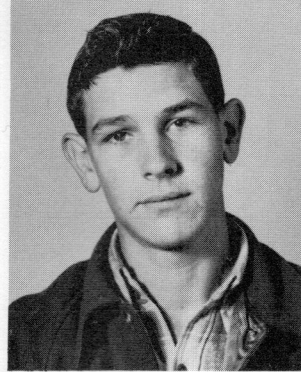


YVONNE ESTES



MARVIN FRANKLIN

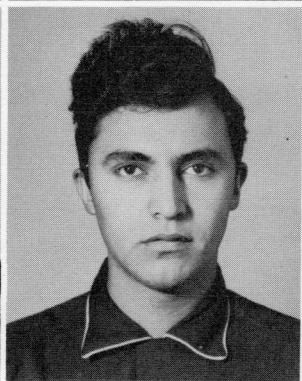




BILL GOACHER

MARY ANN HAMMOCK

BREVARD JONES



SHIRLEY MOORE

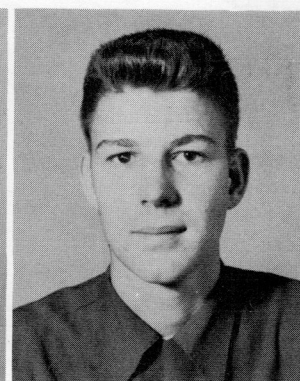
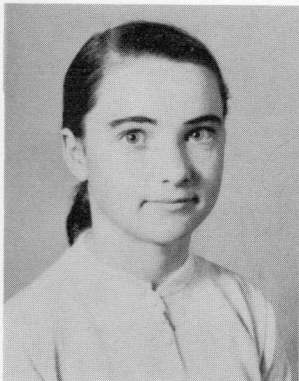
LOUIS PEREZ

OMIJEAN REEVES

IDA MAE SCRAPE

EDITH SELLERS

JAMES SMITH



CAROLYN SORRELS

JOAN SPEARS

LELIA STILES

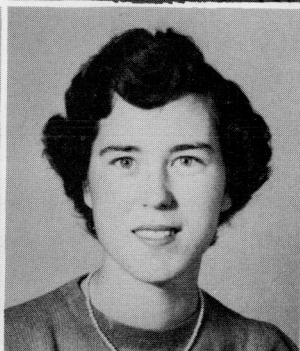


*So Joyce,
I have enjoyed
attending the club with
you these past two years.
Good luck
Bonnie.*

BEVERLY TATE

BONNIE TILLEY

VIVIAN WHITE



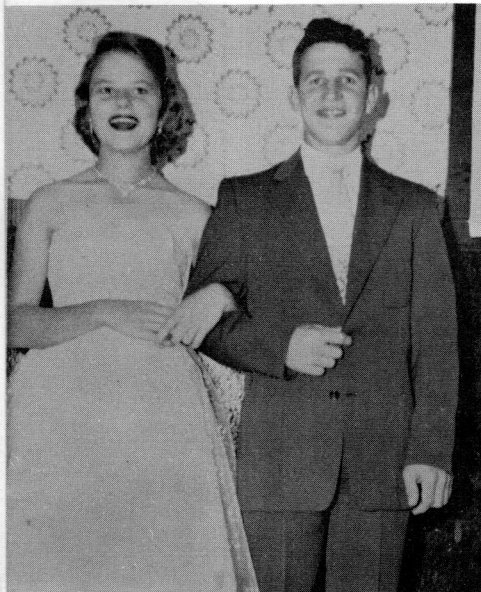
SOPHOMORE CLASS

- President - - - - - Harvey Reisman
- Vice President - - - - - Thomas Beene
- Secretary - - - - - Barbara Chism
- Treasurer - - - - - Clary Lunsford
- Sentinel - - - - - Emmett Gadberry
- Parliamentarian - - - - - Howard Chism
- Reporter - - - - - Cliff Wise



*Remember the times (not saying what kind) we had in Geometry (but don't remember my average.)
I hope you stay as sweet as you are now.
Barbara*

Halloween Royalty Betty Medlin and Johnny Collier

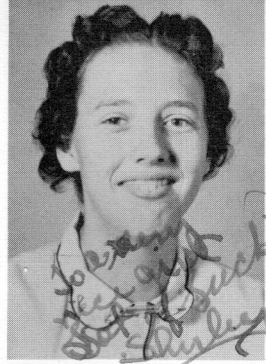


*Dear Jayce,
Always stay as good and sweet as you are.
Lots of love,
Jeanie*

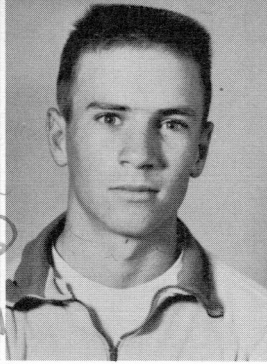
boys I will always remember in Study Hall especially about you are most always remember for all the sweet study and I will always remember for helping me with my paper on the way to the F. H. A. competition in little Rock, when I should have been in study Hall when he walked that way and when Sara

Now we see who doesn't study.

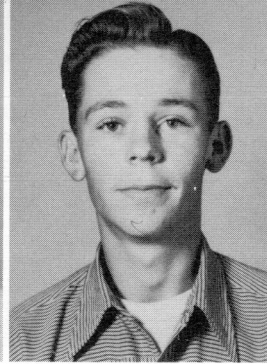




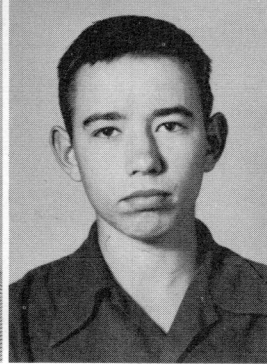
Shirley Atkinson



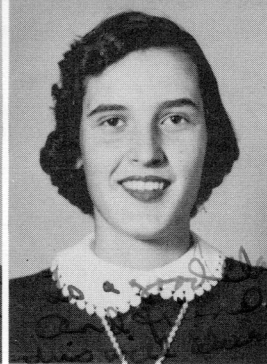
James D. Babb



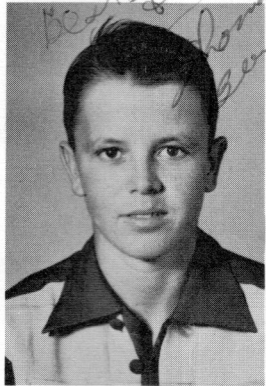
Clyde Barrow



Larry Beene



Martha Ann Beene



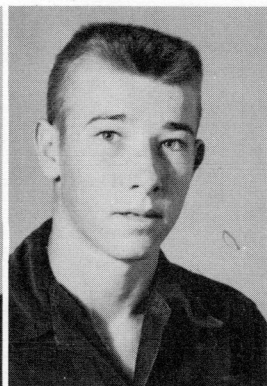
Thomas Beene



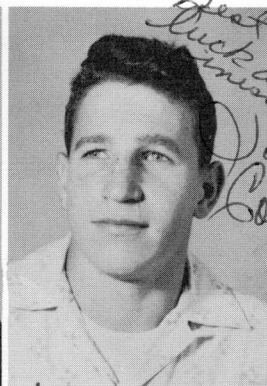
Patsy Chadwick



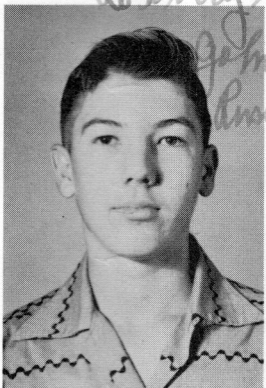
Barbara Chism



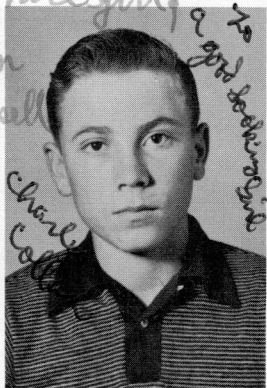
Howard Chism



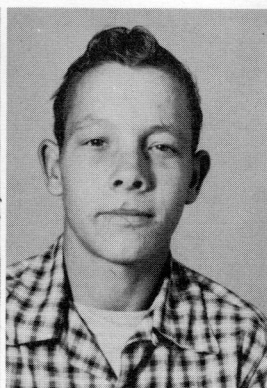
Johnny Collier



John Russell Collier



Charles Ed Collum



Victor Cupples



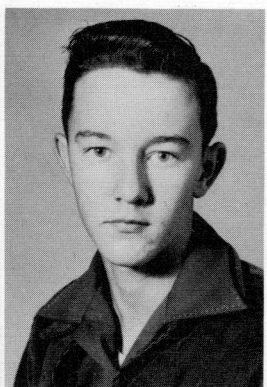
Jan Doss



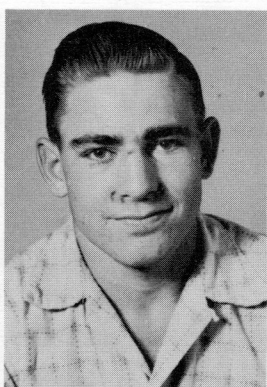
Bobby Estes



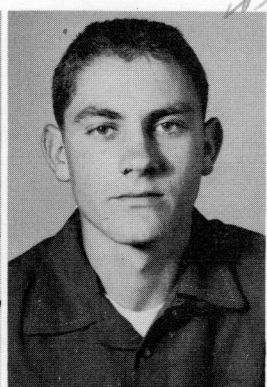
Jeanie Fong



Aaron Franks



Emmett Gadberry



James Gattis



Shirley Goodman

*To every girl
I see
Best of luck
Pat*

*Best wishes
from
Best
Pat*

*Best wishes
Pat*

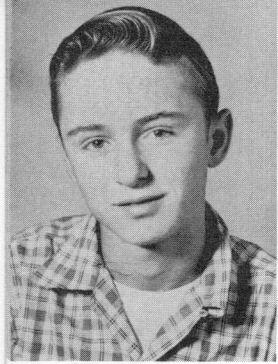
*classmate
hope
ne.
Martha
Ann*

*Best of luck
John
Collier*

*To every nice girl,
John
small*

*To a good looking girl
Charles
Collum*

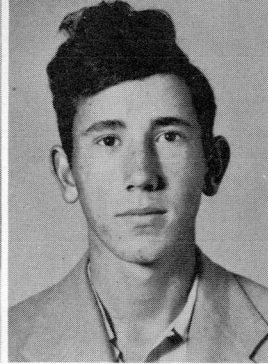
*Jan
Doss
Love
Jan*



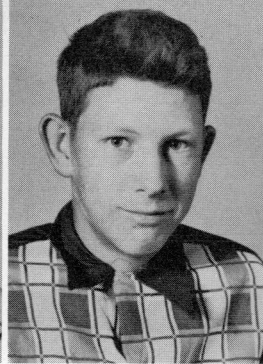
Bobby Griggs



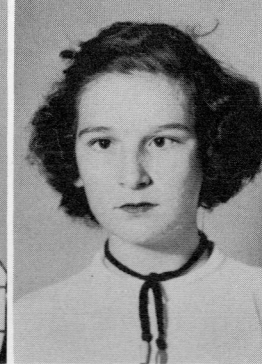
Sara Lou Hassell



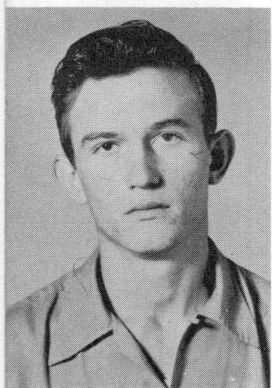
Bill Hooker



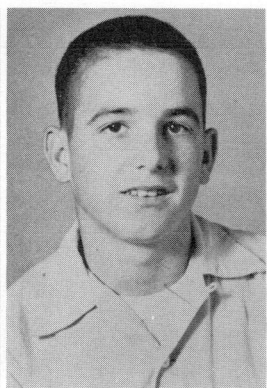
Neil Hopper



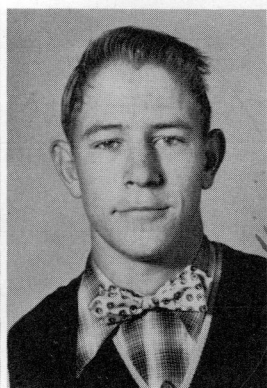
Joyce Johnson



Robert Knighton



Clary Lunsford



Jerry McMillion



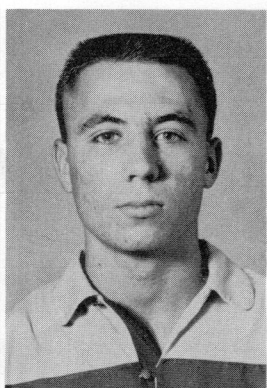
Sherry McMillion



Patsy Mealor



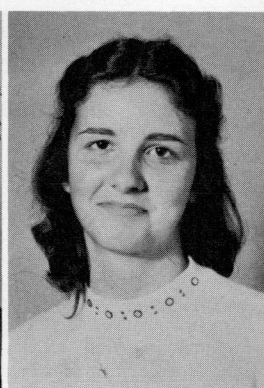
Betty J. Medlin



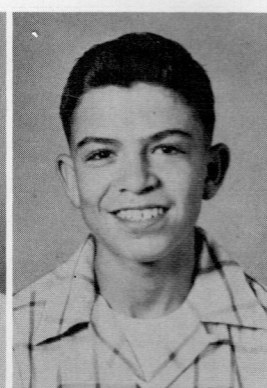
Kuhron Meurrier



Clara Moore



Joyce Odom



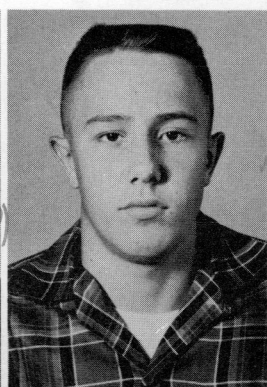
Harvey Reisman



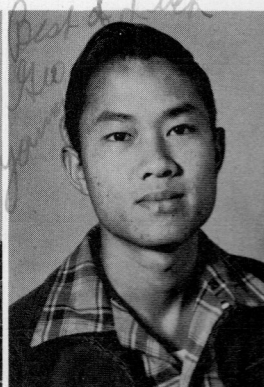
Emma Scrape



Gale Selph

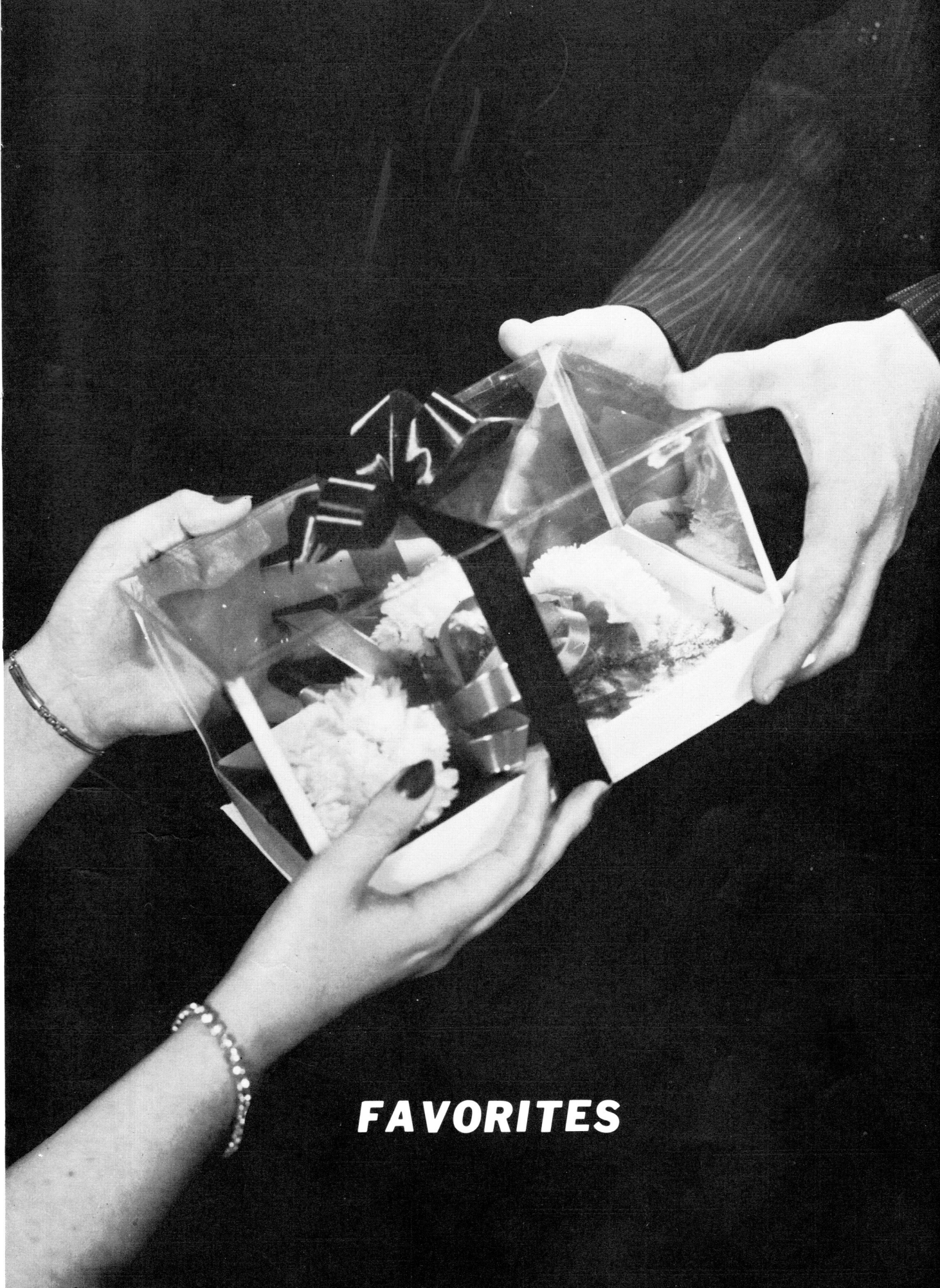


Cliff Wise



George Young

To a very smart and sweet girl, your friend always
L. Harvey



FAVORITES

OUR BEAUTY — MISS JUNE DOWNS



JOHN ROBERT POWERS says: Our selection is based on (a) features and contours of the face, (b) apparent personality and (c) feminine charm. My

choice is influenced by my ever-continuing interest in THE NATURAL GIRL. Congratulations to the winner.

ELIZABETH ADAMS

Junior



Best of everything
to a smart soph.
Love
Joan

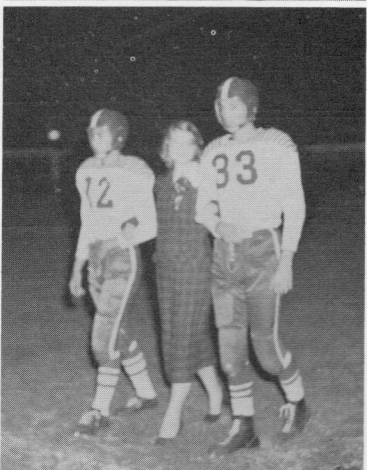
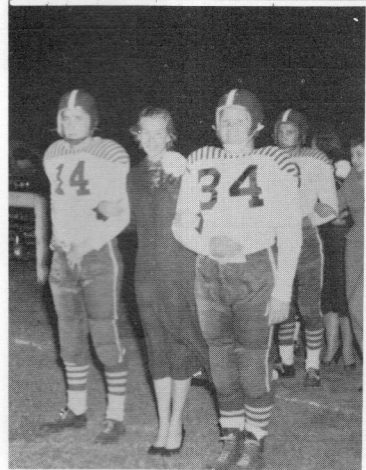
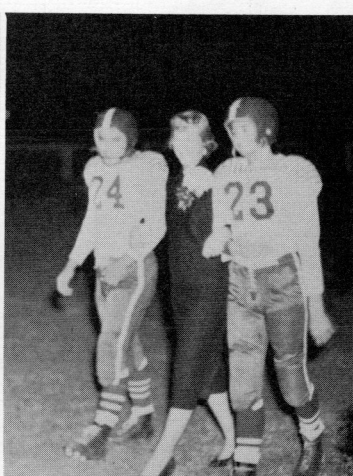
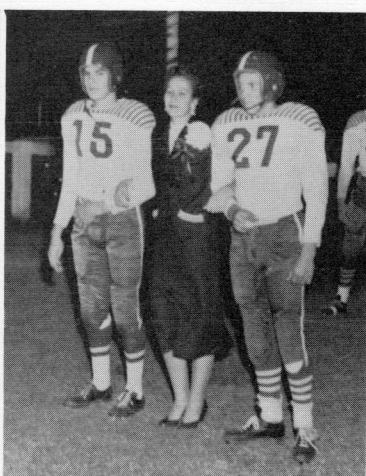
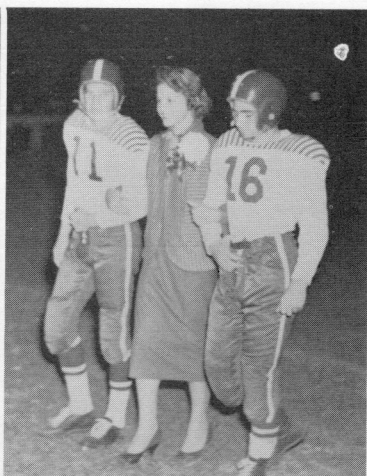


Dear Joyce,
I hope you will always have
the personality and disposition
you have now, because it really
means a lot to always have a
smile on your face. Have fun
in high school and study hard.
Good luck always,
Mary Ann

MARY ANN HAMMOCK

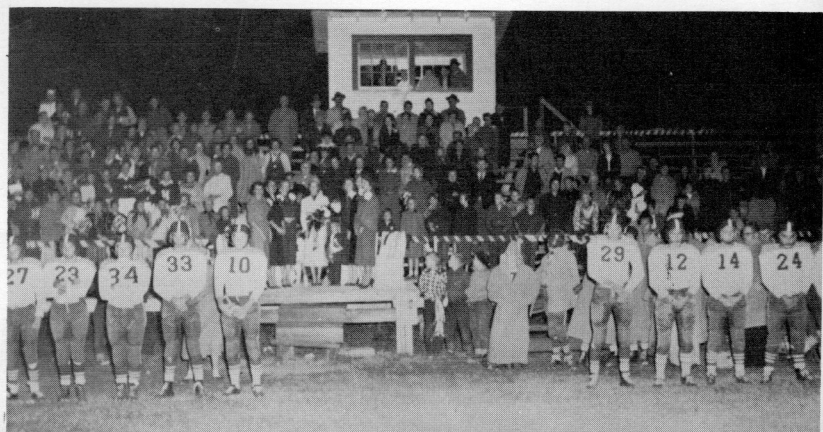
Junior

HOMECOMING GAME



Queen Ann Harrison reigned over the 1954 Homecoming. Her escorts were Co-Captains Thomas Able and Randle Griggs.

Her maids were Martha Carey and Vernell Quarles from the Senior Class. Junior maids were Mary Ann Hammock and Elizabeth Adams. Sophomore representative was Betty Medlin and from the Freshman Class was Fairy Ann Meurrier.



These are our favorites . . .



WHO'S WHO IN H.H.S.

ANN HARRISON and AUSTIN LITTELL

Mr. and Miss Hughes High

Most Talented



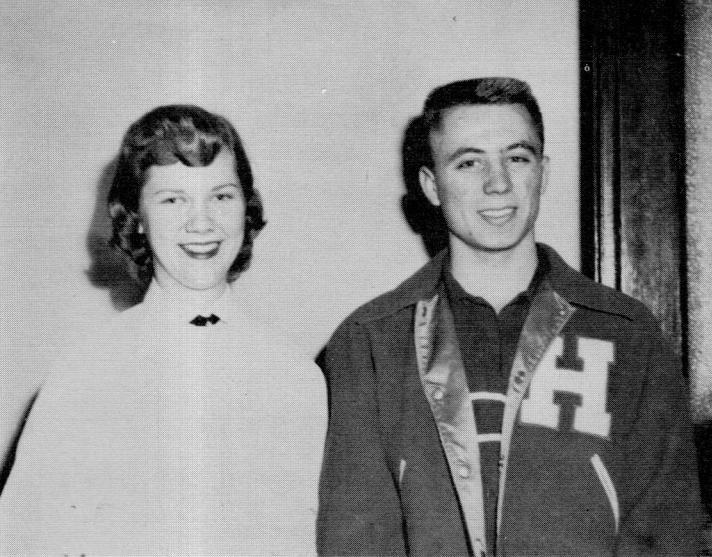
BETTY REA ALLEN
JOHN RUSSELL COLLIER
Most Studious



PING SHONG FONG
TOMMY BRIST
Best Dressed



ELIZABETH ADAMS
BOBBY MEDLIN
Cutest



ELIZABETH ADAMS and KUHRON MEURRIER
Cutest Couple



BETTY REA ALLEN and THOMAS ABLE
Most School Spirit

*Best
Luck
Sweetest
Betty*



BETTY REA ALLEN and WILLIAM HARRIS
Jolliest

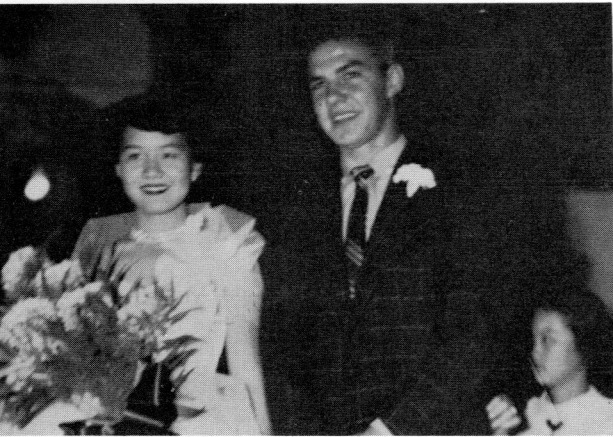


Best All-Round
JUNE DOWNS
THOMAS ABLE

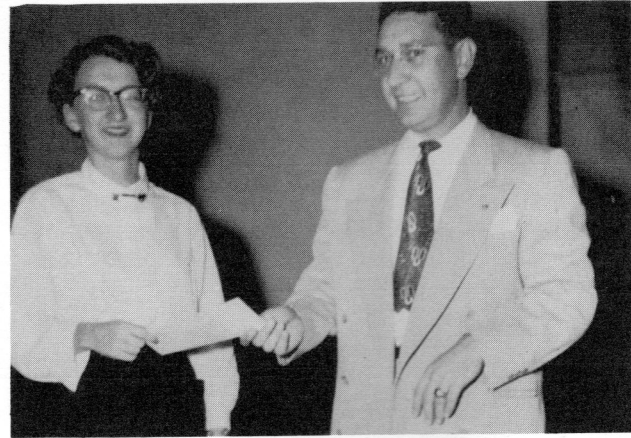


Best Figure
MAYO FONG
BOBBY MEDLIN

Many days we like to remember. Many of our fellow students we will remember. Many occasions we will cherish always.



AUSTIN LITTELL and MAYO FONG represented their class as Halloween King and Queen.



BETTY REA ALLEN received \$25 from a Lion Oil representative for an essay entered in that contest.



RAIFORD PITTMAN, President of the Senior Class, also spent many hours on the football field.



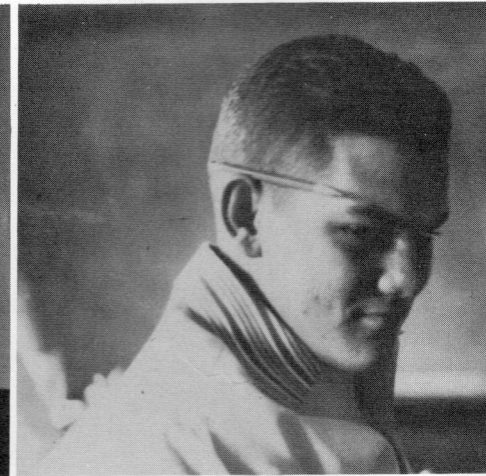
MARY ANN HAMMOCK was the F. F. A. Sweetheart and BOBBY MEDLIN was the F. H. A. Favorite. President HARRIS gives MARY ANN her jacket.



Without the work of MELVIN CREEKMORE, this yearbook would not have been possible.



DORIS McCOLLUM, who is F. H. A. President, appears in Glee Club recital.



This is typical of HORACE DRENNAN who will be co-captain of 1955 football squad.

We never forget the pleasant memories associated with a homecoming celebration. Sometimes weather kept us from having everything just like we wanted it. But it was fun.



In the early morning hours the queen's float was underway.



The cheerleaders walked a while and then rode as the parade moved along.



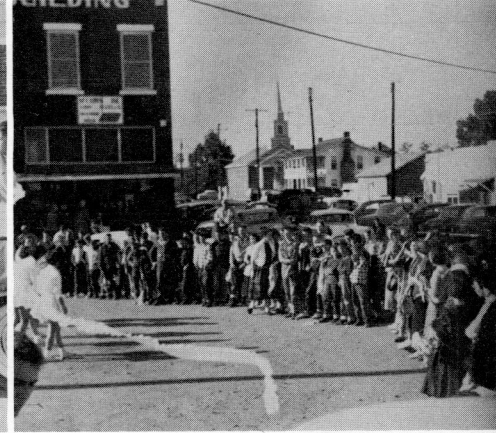
The Dillahunt boys were really pepping up the day.



Other football players were excited about the prospect of winning.



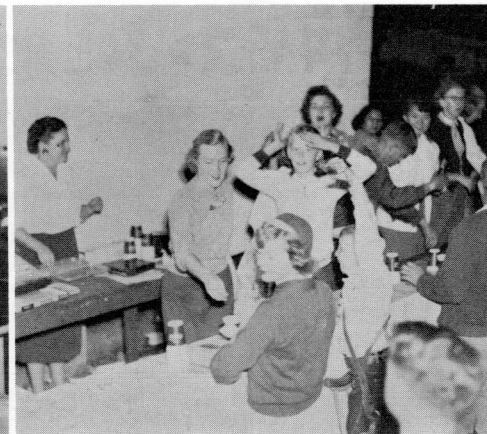
What started as a walking parade soon became a riding one.



Downtown was the giant pep rally.



Coach Meador offered a few words of encouragement and invited citizens to the game.



The concession stand was at its busiest during the half.



Students, teachers and alumni enjoyed the homecoming dance.

The everyday classroom scenes and campus happenings play an important part in our school life.



These Glee Club Officers spent a lot of their noon hours singing.



Sometimes we took pictures of others taking pictures of still others.



Sometimes we studied in Social Science and sometimes we didn't.



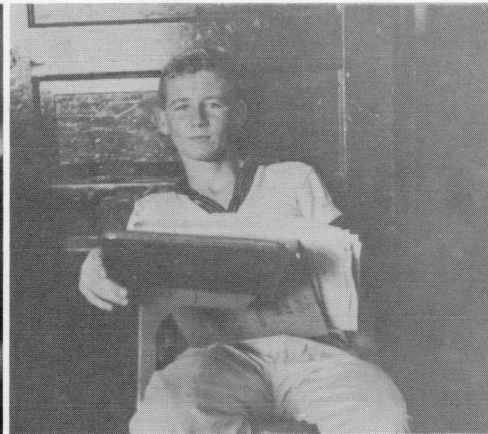
The senior girls casually strolled to Home Economics each day.



These freshman girls were anxious to see anything that was going on.



Bonnie Tilley tried to concentrate on English.



Ann Harrison kept up an interested appearance.



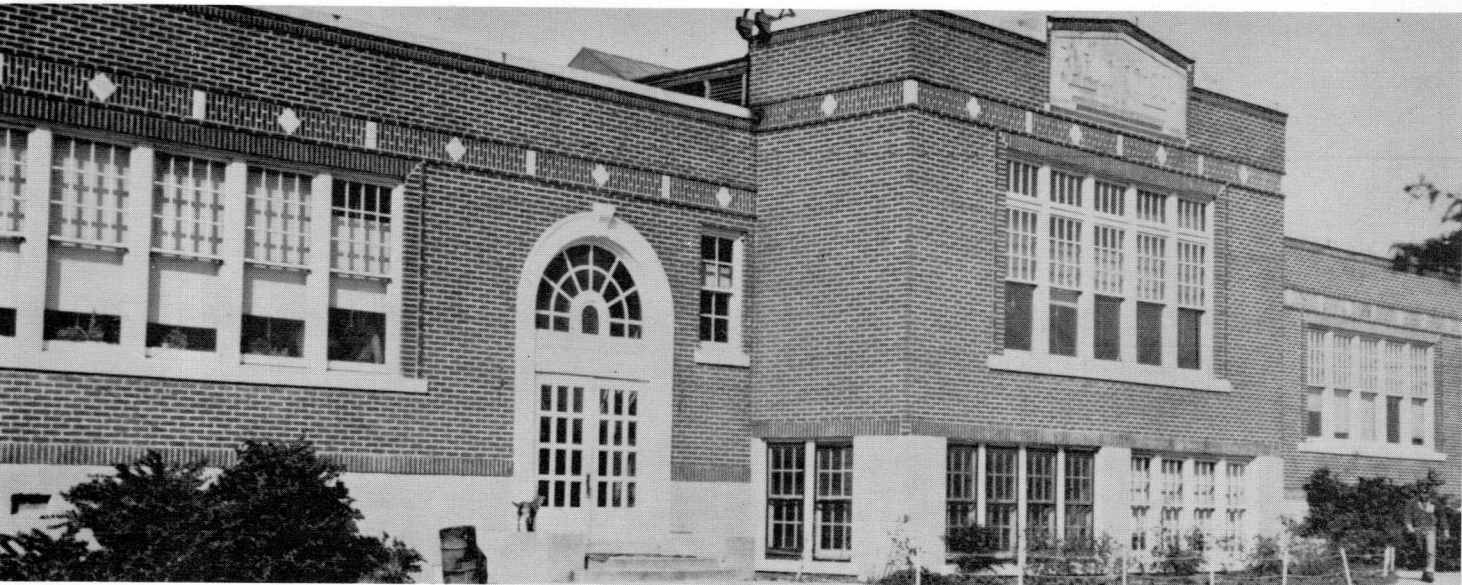
While Toots spent hours at the typewriter.

We cherish the thought of days such as these.

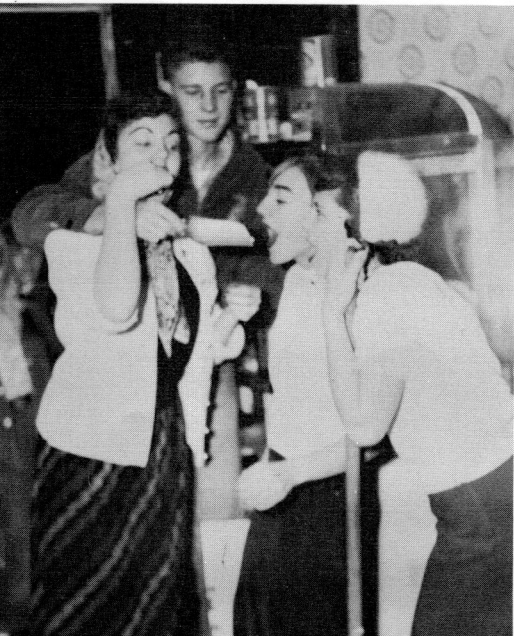


Mary Ann, Carolyn and Toots
make a Junior Trio (Above)

JUNIOR-SENIOR BANQUET



Ole Hughes Hi



Freshmen got
caught with
the popcorn.

Santa was a
welcome sight!





In February we organized a safety patrol and the State Police helped us.



Beverly remembers well the football banquet.



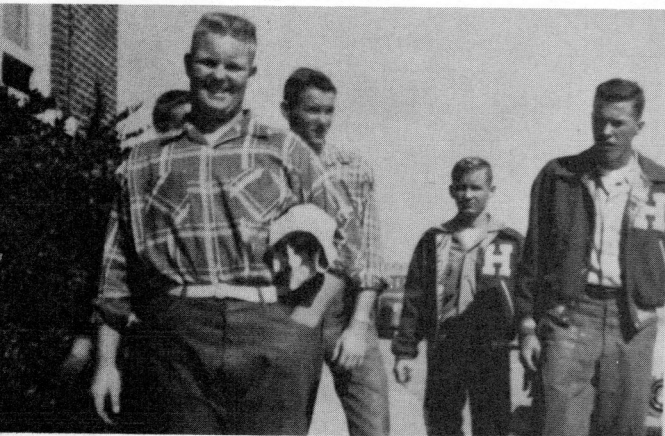
Performing for the public was fun.



Hughes must be in the end zone judging by Carolyn and James M.



Ann and Randle wish for one more dance.



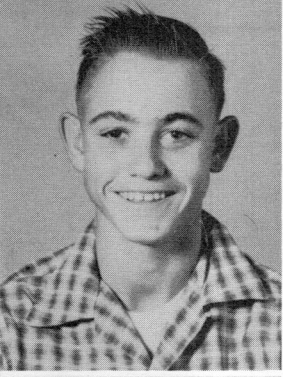
Junior boys flanked by senior boys.



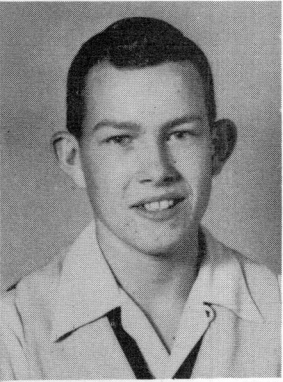
Sometimes our days were wrecks.



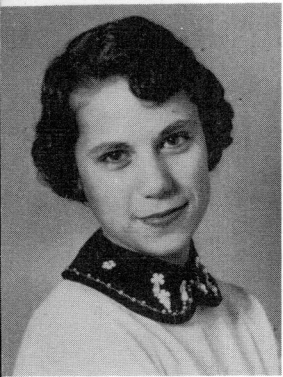
JUNIOR HIGH



Robert Little



Curtis Moore



Fairy Ann Meurrier

FRESHMEN

*Stay as sweet as you
are! Don't ever give up!
or let your efforts wrinkle!
Glenda*



Glenda Griggs and Jimmy Shull were our Halloween Royalty.

OFFICERS

- President - - - - - Robert Little
- Vice President - - - - - Curtis Moore
- Secretary - - - - - Fairy Ann Meurrier
- Treasurer - - - - - Hing Fong
- Reporter - - - - - Bessie Lynn Chamblee
- Sentinel - - - - - Lynn Sanders



Joyce Beene

Wayne Beene

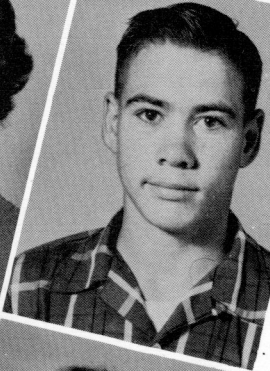
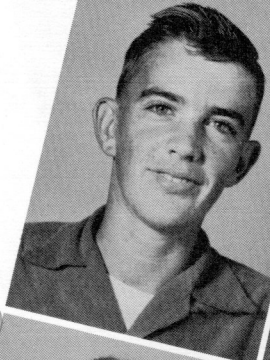
Olivia Boyd

*So a sweet girl,
Stay that way &
you'll always find
happiness.*

Bobbie Sue Carey

Bessie Lynn Chamblee

Leslie Chrestman



Richard Chrestman

Joyce Cordell

Delbert Creekmore

*Lots of luck
to a sweet girl
Betty*



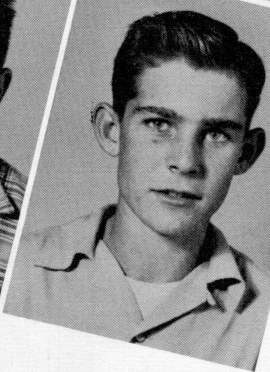
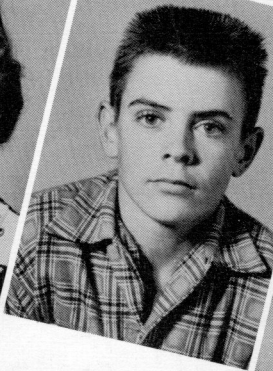
*Lots of
we and
me*

Betty Jean Elliott

Hing Fong

Glenda Griggs

*Appreciate
and luck
always.
Glenda*



Virginia Hendrix

Sherrald Jones

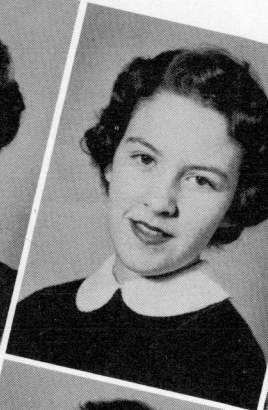
Gerald Malone

Patsy McIntyre

Margaret McKenzie

Robert Miller

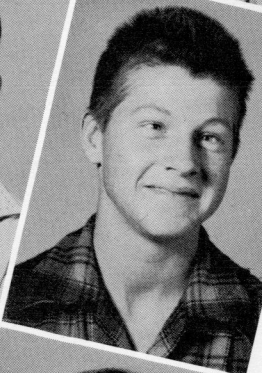
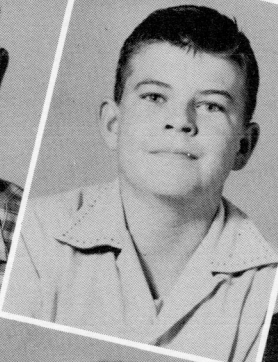
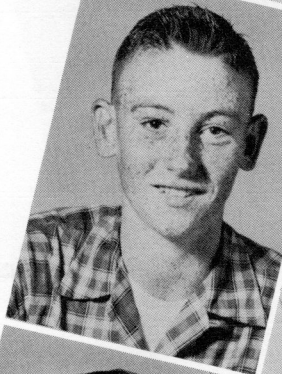
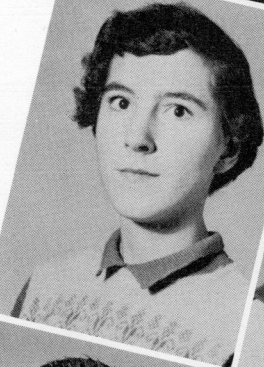
*Best Wishes
to
everyone
from
the
staff*



Elizabeth Murphy

Theresa Perez

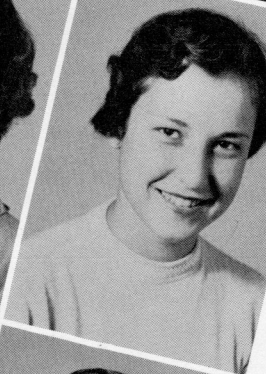
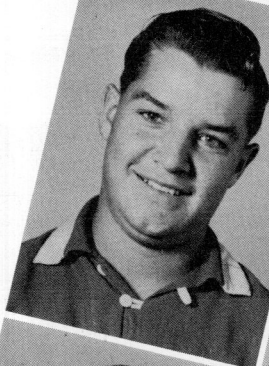
William Reidhar



Lynn Sanders

Robert Selph

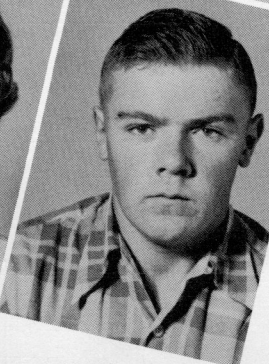
Jack Shidler



Jimmy Shull

Barbara Stimpson

Betty Stimpson



Dovie Taylor

Charlene Vest

Johnny Walton

EIGHTH GRADE



Laurel Fong
President



Frankie Akers and Gary
Chittom crowned the
May Day Royalty last
spring.

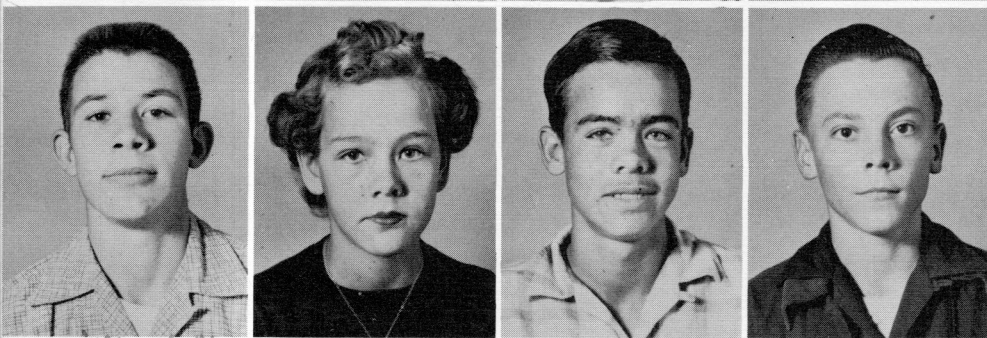
OFFICERS

- President - - - - - Laurel Fong
Vice President - - - - - Brenda Griffin
Secretary - - - - - Grady Collum
Treasurer - - - - - Patricia Permenter
Reporter - - - - - Ming Lee

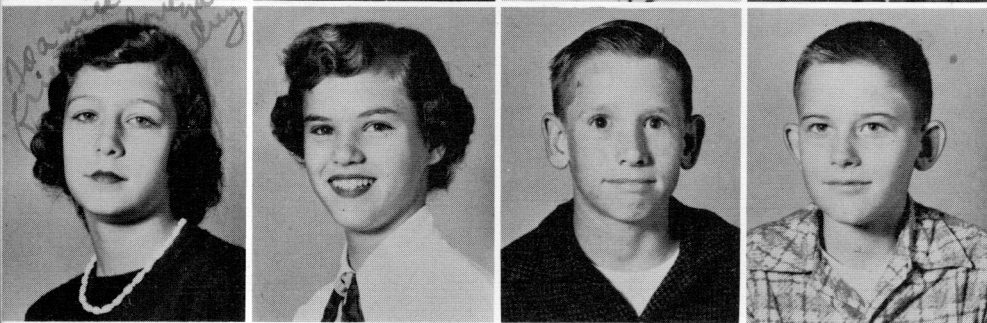




Frankie Akers
 Margie Bateman
 Jane Beene
 Charlotte Burchfield



Gary Chittom
 Faye Christian
 Jerry Christian
 Grady Collum

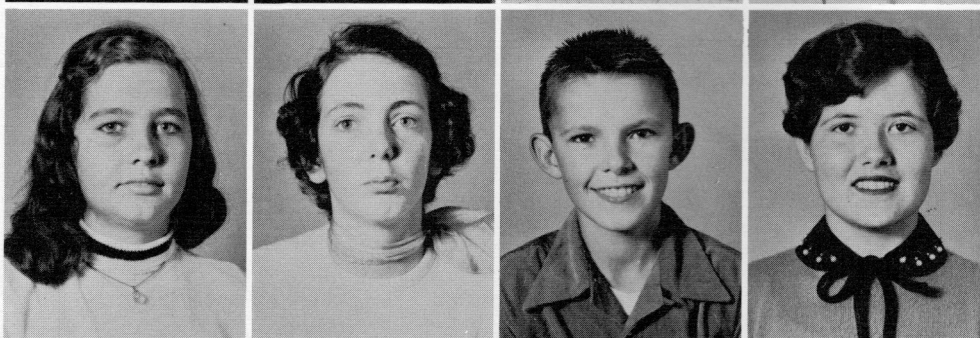


Audrey Cordell
 Ann Cranor
 Alfred Creekmore
 Kenny Edmondson

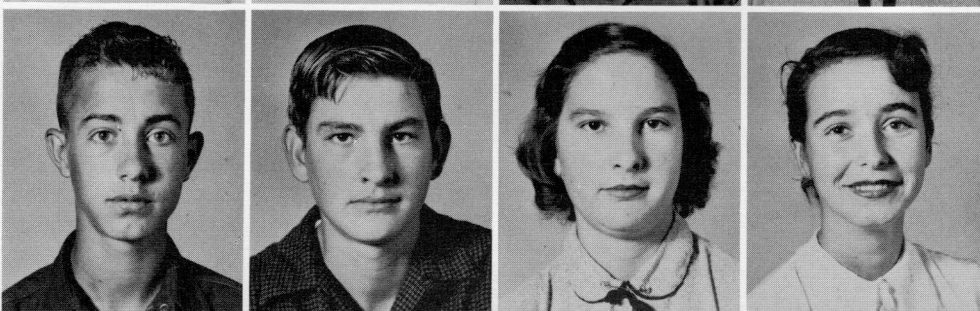
Harold Estes
 Helen Ford
 Johnny Franco
 Brenda Griffin



Ann Griggs
 Betty Sue Hassell
 Bobby Henry
 Kay Hugueley

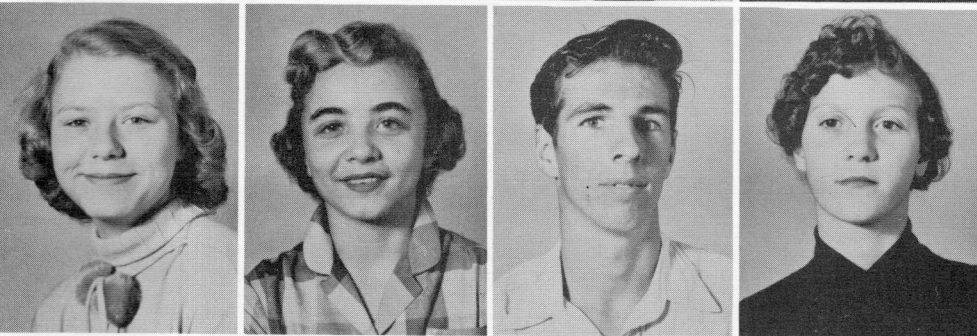


Joe Jarrell
 Holmon Kelley
 Lois Kelley
 Gracie Lawrence

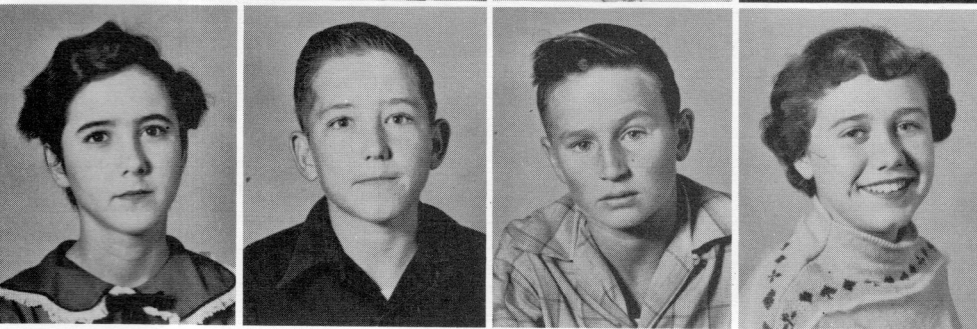




Richard Lawrence
Ming Lee
Edith Long
Jimmy McCollum



Billye Medlin
Margaret Mills
Jerry Moise
Sue Moore



Linda Murphy
Edward Nelson
W. L. Parker
Patricia Permenter

Charles Ed Reeves
Clara Ruth Reidhar
Patsy Russell
Joy Sanders

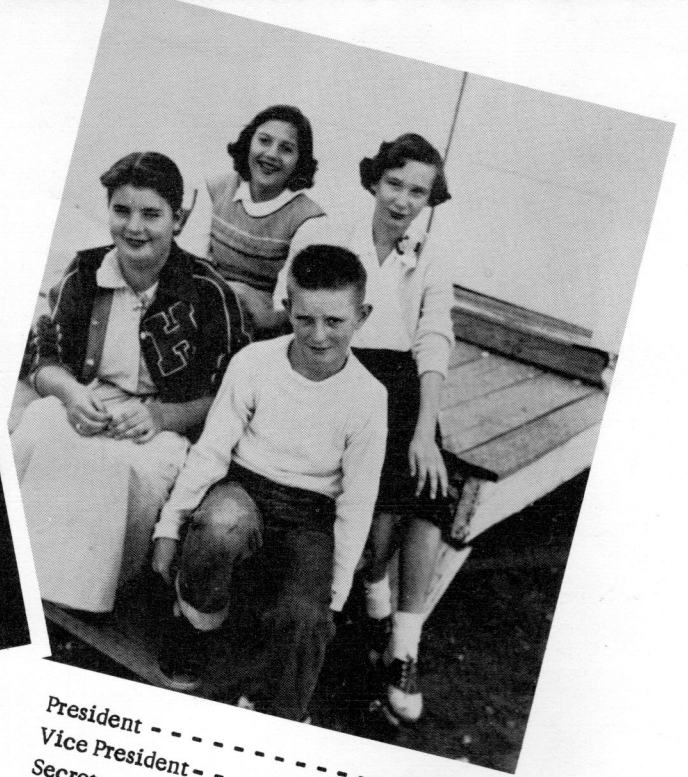
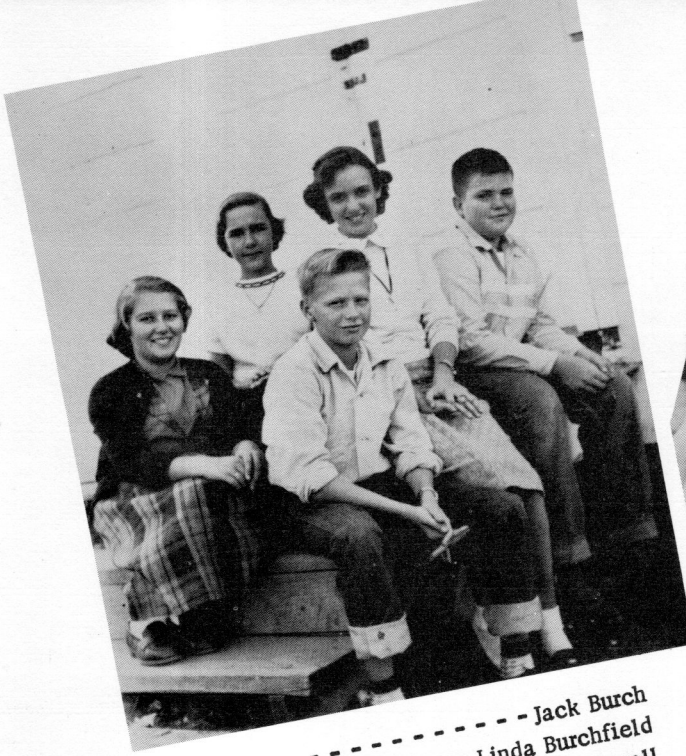


Jack Scrape
Calvin Stackhouse
Brenda Sykes
Richard Tate



Minnie Jean Taylor
Willadene Taylor
Margaret Wilson
Patricia Woods

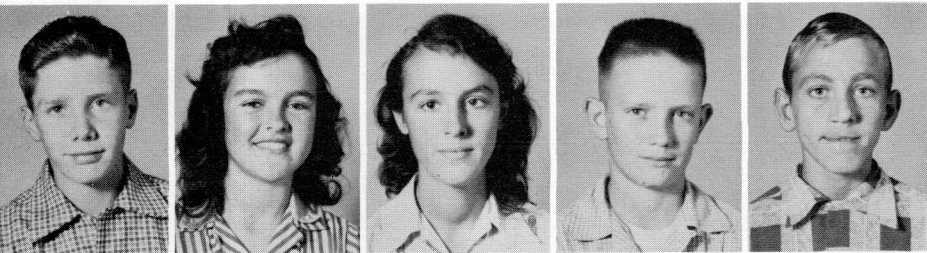




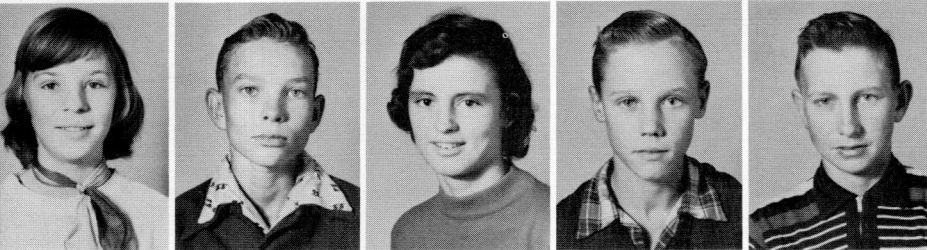
President - - - - - Jack Burch
 Vice President - - - - - Linda Burchfield
 Secretary - - - - - Kathryn Duvall
 Treasurer - - - - - Wilson Pittman
 Reporter - - - - - Nancy Lazenby

President - - - - - Mickey Babb
 Vice President - - - - - Jean Gadberry
 Secretary - - - - - June Elliott
 Reporter - - - - - Dorothy Spears

SEVENTH GRADE



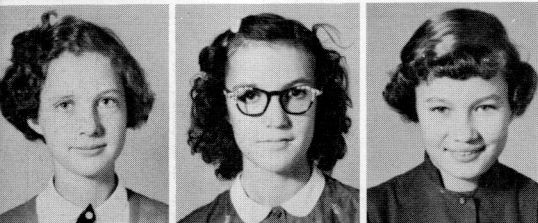
James Allison
 Bonnie Altman
 Jennie V. Altman
 Mickey Babb
 Truman Baker



Betty Barrow
 Jimmy Bateman
 Linda Beene
 Truman Benjamin
 Paul Bickerstaff



Martha Bledsoe
 Betty Boles
 Doris Boozer
 Jack Burch
 Linda Burchfield



Gladys Burns
 Martha Campbell
 Sherry Faye Chism

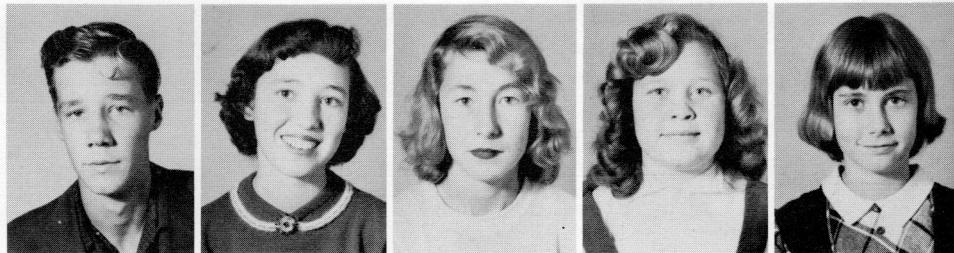


Rayford Chrestman
 Raymond Chrestman
 David Clark
 Stanley Clark
 Larry Cotham

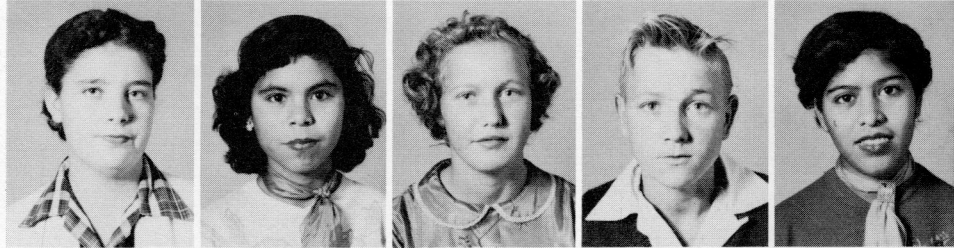
James Earl Cox
 Harvey Cummings
 Richard Cupples
 James Daniel
 Diane Davis

Gertrude Davis
 David Deese
 Eulene Durham
 Kathryn Duvall
 June Elliott

Dean Faulk
 Ruby Featherston
 Lilly Mae Feltman
 Mary Jane Foster
 Betty Gadberry



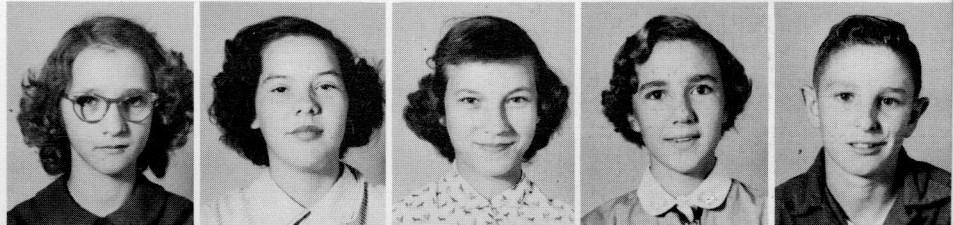
Jean Gadberry
 Maria Garcia
 Lou Ella Gardner
 James Gates
 Frances Gonzales



Ophelia Gonzales
 Oralia Gonzales
 Mary Ellyn Green
 Carol Hale
 Kay Hassell



Joyce Ann Hopper
 Helen Johnson
 Patricia Latham
 Nancy Lazenby
 Gene Lehr



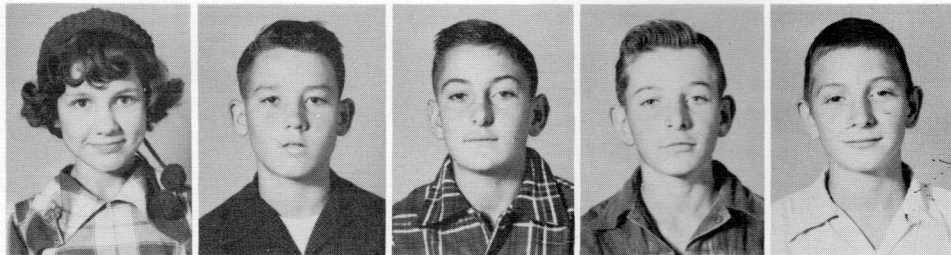


Roy Lilly
 Hazel Jean Little
 Doyle Long
 Barbara Lunsford
 Johnny Malone

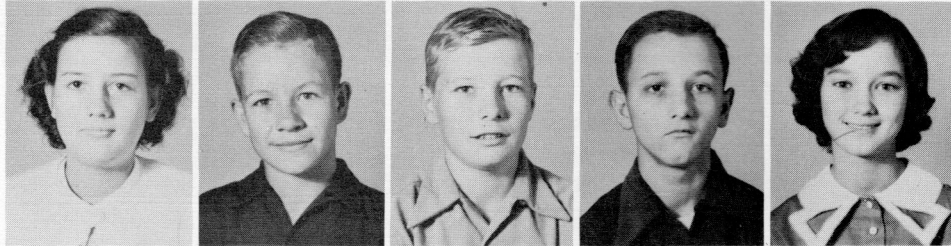
Rolfe Martin
 Eugene McCain
 Claude Miller
 Lloyd Mills
 Kay Moore

Robert Murphy
 Sherris Ann Nixon
 Billy Ray Norris
 Wilson Pittman
 Bobby Pouncey

Mary Ellen Reidhar
 Carl Raymond Rose
 John David Russell
 Paul Sellers
 Buddy Shidler



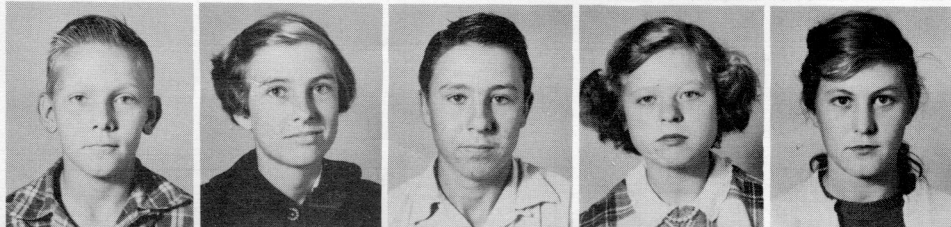
Dorothy Spears
 Jerrold Stackhouse
 James Steele
 Bobby Joe Stimpson
 Lena Sue Stoddard



Jerry Street
 Joel Street
 Barbara Sykes
 Danny Tate
 Hazel Underwood



Wayne Walton
 Stella Weaver
 Arlie Williams
 Joyce Williams
 Lois Young



THE JUNIOR HIGH GLEE CLUB

gives every seventh and eighth grade student an opportunity to take part in group singing. Here are our members:

Frankie Akers, James Allison, Mickey Babb, Betty Barrow, James Bateman, Patricia Bateman, Jane Beene, Truman Benjamin, Paul Bickerstaff, Martha Bledsoe, Doris Boozer, Betty Boles, Linda Beene, Jack Burch, Charlotte Burchfield, Linda Burchfield, Gladys Burns, Martha Campbell, Raymond Chrestman, Rayford Chrestman, Sherry Chism, Jerry Christian, Faye Christian, Cary Chittom, David Clark, Stanley Clark, Grady Collum, Audrey Cordell, Tommie Cordell, William Larry Cotham, James Earl Cox, Ann Cranor, Alfred Creekmore, Harvey Cummings, James Daniel, Diane Davis, Gertrude Davis, Eulene Durham, David Deese, Kathryn Duvall, Kenny Edmondson, June Elliott, Harold Estes, William Faulk, Ruby Featherstone, Lillie Mae Feltman, Laurel Fong, Helen Ford, Mary Jane Foster, Johnny Franco, Betty Gadberry, Jean Gadberry, Delia Garza, James Gates, Mary Ellyn Green, Brenda Griffin, Ann Griggs, Oralia Gonzalez, Betty Hassell, Kay Hassell, Willie Haycraft, Bobby Henry, Joyce Hopper, Kay Hugueley, Joe Jarrel, Helen Johnson, Holman Kelly, Richard Lawrence, Gracie Lawrence, Nancy Lazenby, Nancy Lee, Gene Lehr, Roy Lilly, Hazel Jean Little, Doyle Long, Edith Long, Barbara Lunsford, Johnny Moise, Gerald Malone, Johnny Malone, Rolfe Martin, Eugene McCain, Billye Medlin, Jimmy McCollum, Claude Miller, Margaret Mills, Loyd Mills, Kay Moore, Linda Murphy, Robert Murphy, Edward Nelson, Sherris Ann Nixon, Billy Norris, W. L. Parker, Patricia Permenter, Wilson Pittman, Robert Pouncey, Charles Ed Reeves, Clara Reidhar, Mary Ellen Reidhar, Raymond Rose, John Russell, Joy Sanders, Jack Scrape, Paul Sellers, Buddy Shidler, Calvin Stackhouse, Jerrold Stackhouse, Jerry Street, Joel Street, Brenda Sykes, Danny Tate, Richard Tate, Minnie Jean Taylor, Willa Dean Taylor, Hazel Underwood, Wayne Walton, Stella Mae Weaver, Mickey White, Arlie Williams, Margaret Wilson, Patricia Woods, Lois Young.

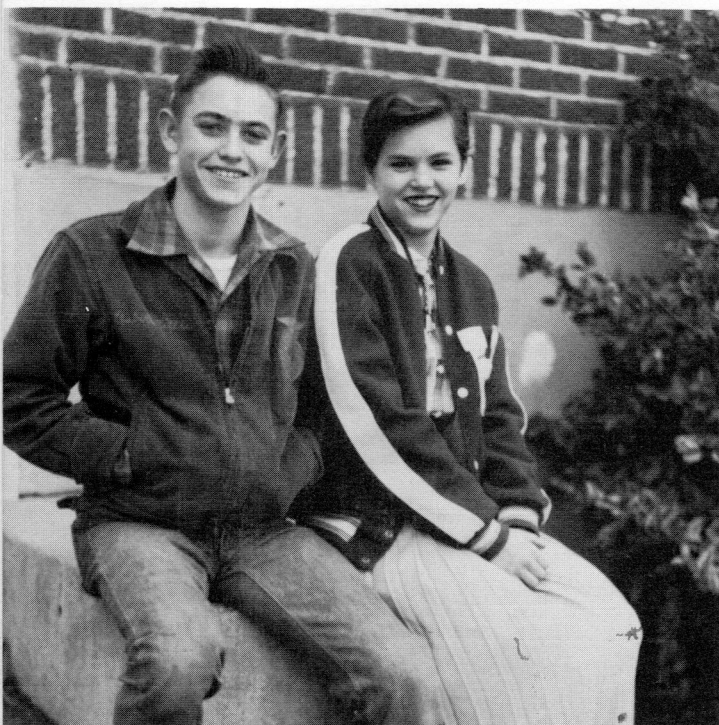


These are our selections for

JUNIOR HIGH WHO'S WHO



FAIRY ANN MEURRIER and ROBERT LITTLE
Mr. and Miss Hughes Junior High
Best All-Round
Cutest Boy and Girl



ANN CRANOR and ROBERT LITTLE
Friendliest



FAIRY ANN MEURRIER and CURTIS MOORE
Best Dressed



JOYCE BEENE and ROBERT LITTLE
Best Personality



GRADY COLLUM and LINDA BURCHFIELD
Most Studious

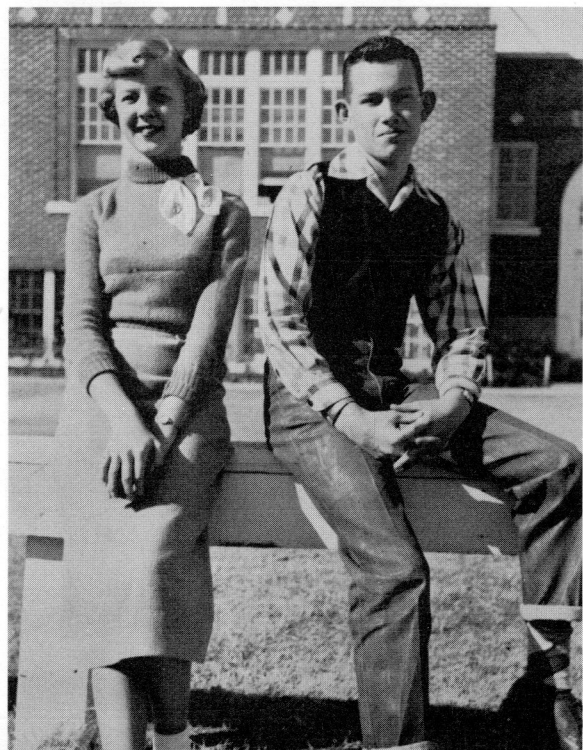


Most Talented Girl
PATRICIA PERMENTER



Most Talented Boy
BOBBY PONCEY

CURTIS MOORE and JOYCE BEENE
Most School Spirit



GLENDIA GRIGGS and JACK BURCH
Wittiest



*Crazy's
Linda
Linda*

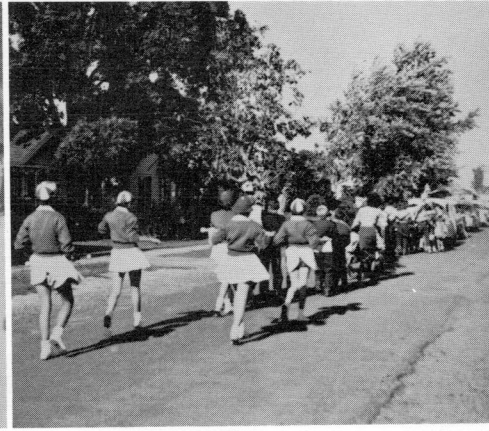
Many things kept us busy during our days in school. Some were fun--but still some were hard days.



Downtown we got to lead yells at the pep rally.



At Christmastime we sang in the gym at the community tree.



The parade--though only a few blocks--seemed miles long.



Collum and Chittom performed at this community program.



Kay Moore was really whipped after her hike.



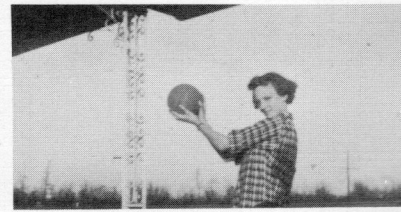
Bobby Pouncey was a favorite at all assemblies.



We were proudest of the record we made at the junior tournament.

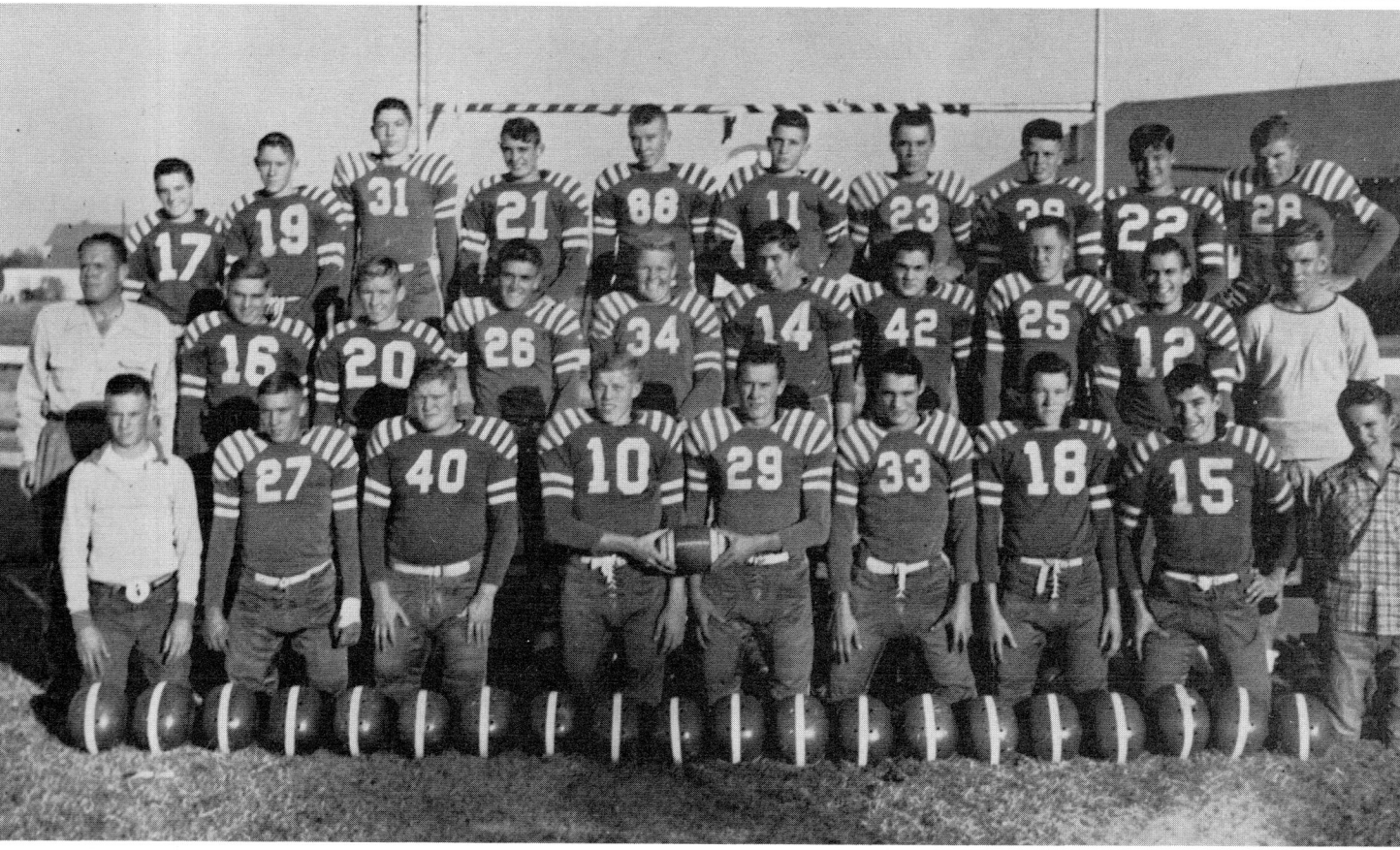


We studied about Arkansas History.



Lazenby and Lunsford, future ball players of HHS.

ATHLETICS

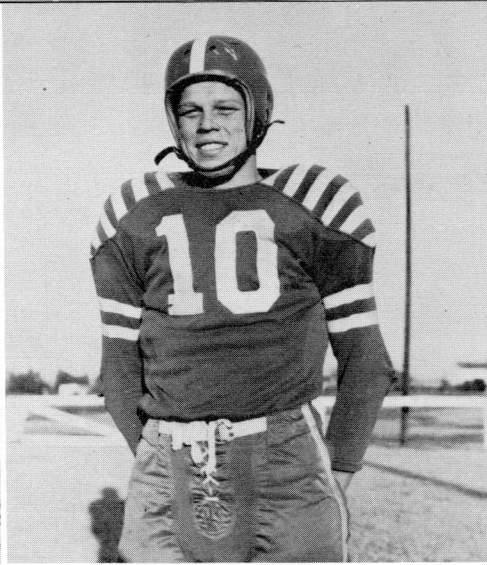


BLUE DEVIL SCHEDULE 1954

			WE	THEY
Sept.	10	Elaine	51	0
	17	Earle	19	18
	24	Barton	31	7
Oct.	1	Gillette	13	6
	8	Parkin	7	13
	15	Holly Grove	14	7
	22	Marvell	20	7
	29	Marianna	6	20
Nov.	5	Clarendon	0	19
	12	DeValls Bluff	27	7
	19	Shawnee	20	13



Center, RANDLE GRIGGS
Captain 1954 All-District



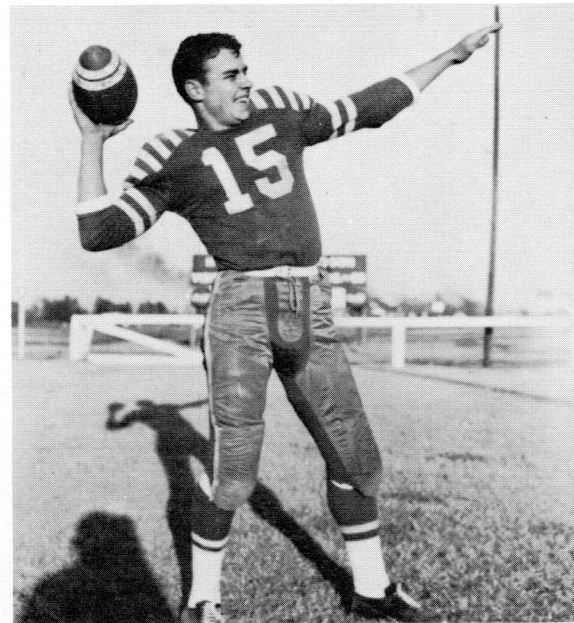
End, THOMAS ABLE
Captain 1954 All-District



Guard, WILLIAM HARRIS



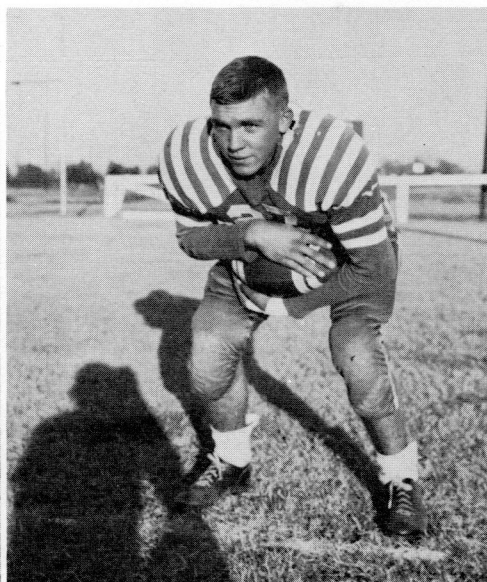
Senior Class members of squad



Halfback, AUSTIN LITTELL
All-District



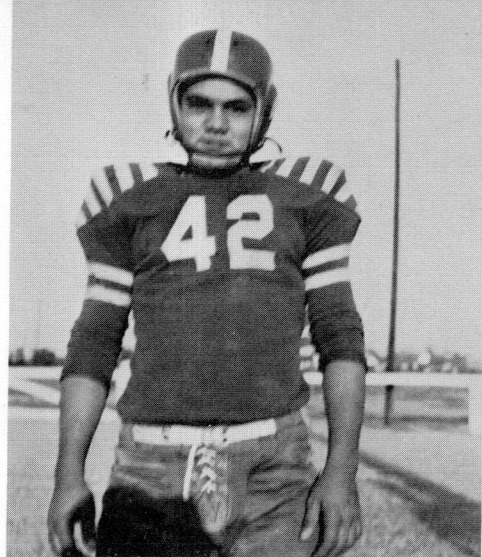
Tackle, RAIFORD PITTMAN



Fullback, BYRON ASHBY



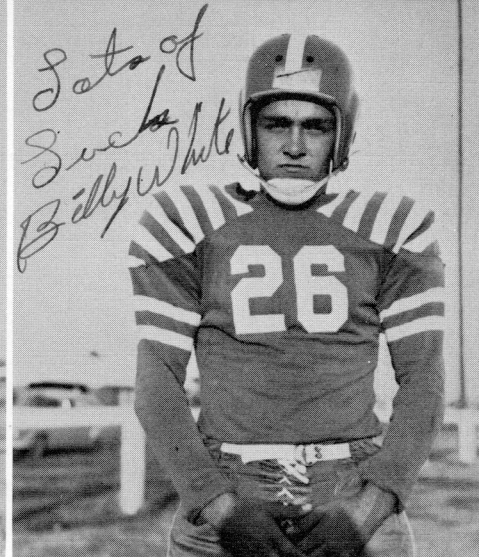
End, ROBERT STODDARD



Tackle, HORACE DRENNAN
Co-Captain 1955



Halfback, TEDDY HARRISON



Fullback, BILLY WHITE



Junior Class squad members



Fullback, BOBBY MEDLIN
Co-Captain 1955



Guard, HUGH M. DILLAHUNTY
All-District



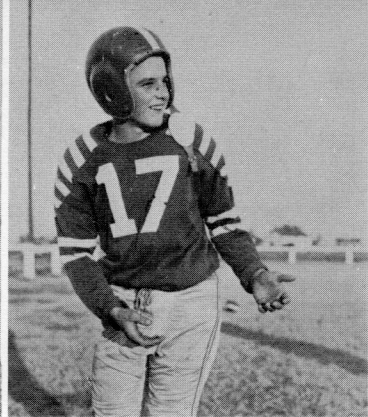
End, STEVE BERNARD



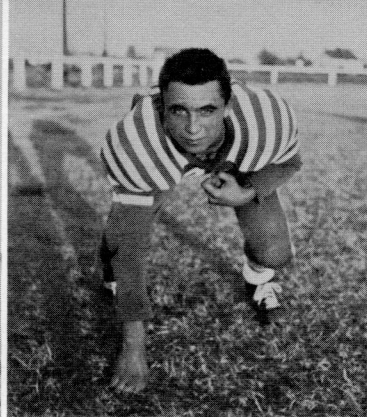
End, JOHNNIE WALTON



Quarterback
JOHNNIE COLLIER



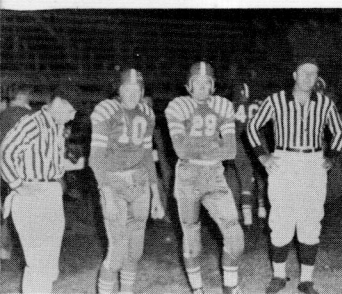
Halfback
CLARY LUNSFORD



End
KUHRON MEURRIER



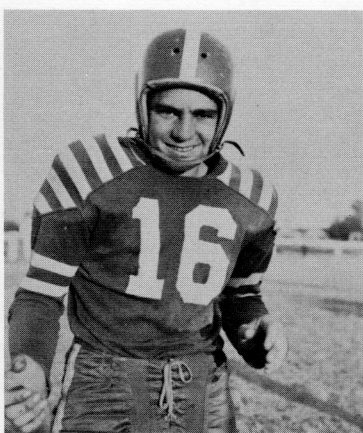
Tackle
BOBBY ESTES



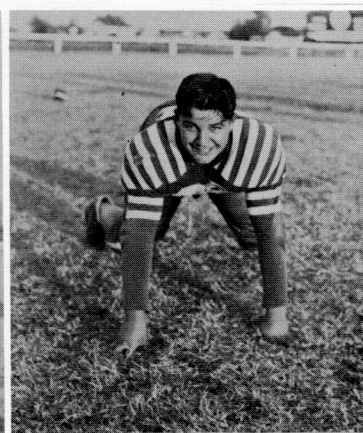
Captains
GRIGGS and ABLE



Tackle, J.R. COLLIER



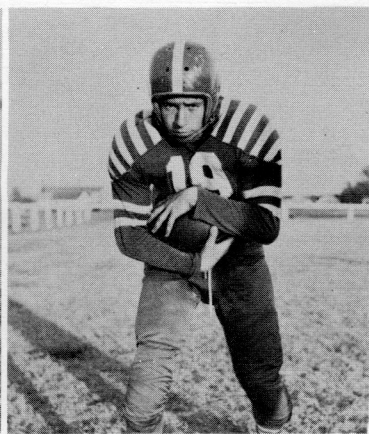
Guard, EMMETT GADBERRY



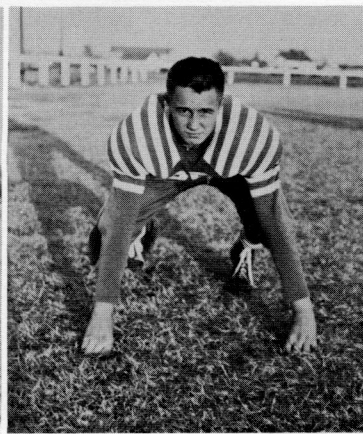
End, JIMMY SHULL



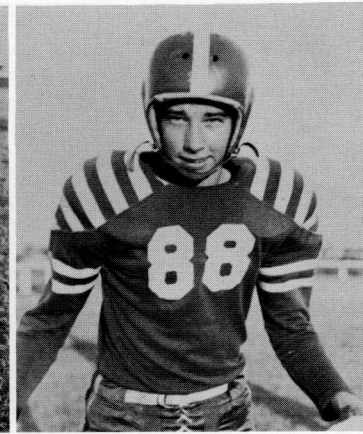
End, THOMAS BEENE



Halfback, JERRY McMILLION



Guard, CLIFF WISE



Center, HOWARD CHISM

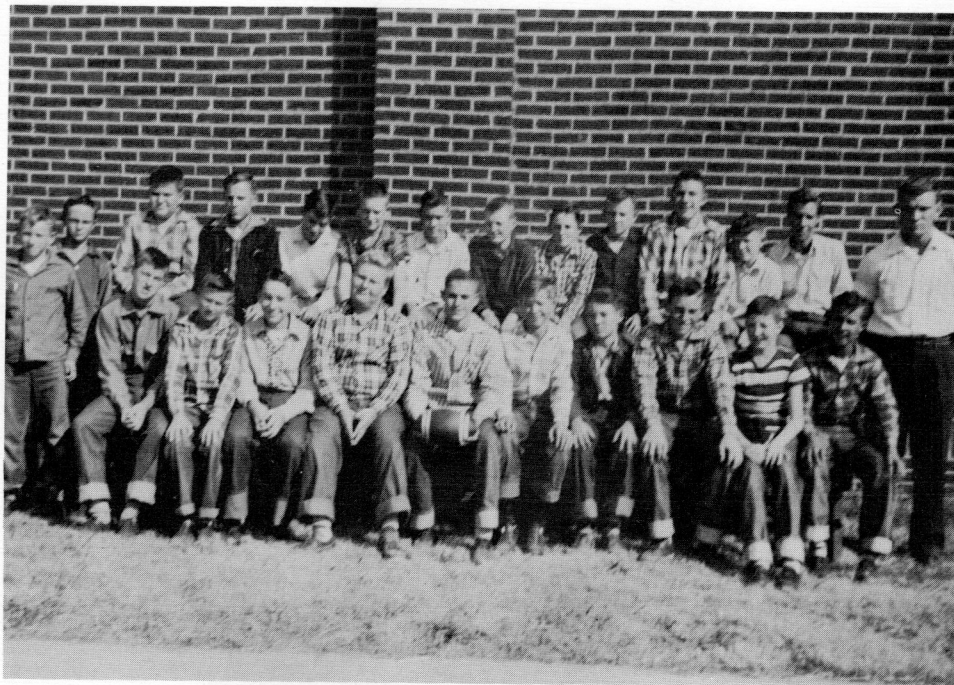
Only waiting for the day when they will be full-fledged Blue Devils are the

IMPS

James Allison - - - - -	Back	Robert Little - - - - -	Back
Mickey Babb - - - - -	Back	Doyle Long - - - - -	End
Wayne Beene - - - - -	End	Jimmy McCollum - - - - -	Back
Steve Carter - - - - -	Back	Robert Miller - - - - -	Guard
Gary Chittom - - - - -	Tackle	W. L. Parker - - - - -	Guard
David Clark - - - - -	Guard	Wilson Pittman - - - - -	Center
Grady Collum - - - - -	Back	Bobby Pouncey - - - - -	Back
Tommy Cordell - - - - -	Guard	Raymond Rose - - - - -	Guard
Delbert Creekmore - - - - -	Back	Lynn Sanders - - - - -	End
Kenny Edmondson - - - - -	Back	Jack Shidler - - - - -	Tackle
Harold Estes - - - - -	Tackle	Calvin Stackhouse - - - - -	Back
Dean Faulk - - - - -	Tackle	Jerold Stackhouse - - - - -	Back
Joe Jarrell - - - - -	Guard	Holmon Kelley - - - - -	Center
Gene Lehr - - - - -	End	Alfred Creekmore - - - - -	Manager
Coach: James Clark			

SCHEDULE

	WE	THEY
Marianna	6	20
West Memphis	6	38
Elaine	20	6
Earle	13	6
Marianna	6	19
Earle	25	0



Faithful in all kinds of weather were the

CHEERLEADERS



SENIORS: Barbara Chism, Elizabeth Adams, Doris McCollum, June Downs, Mary Ann Hammock and Betty Medlin.

ALMA MATER

Old Hughes High, Old Hughes High
We praise with all our might
Love and honor, loyalty, to colors blue and white
We play fair, we fight square
And hold our head up high,
If we lose we're never blue
We go right on and smile
Keep our fame, praise our name
Through laughter and through tears,
Wherever we roam,
We're never alone,
With the memories of Old Hughes High.



JUNIORS: Kay Moore, Kay Hassell, Fairy Ann Meurrier, Bessie Lynn Chamblee, Ann Cranor, and Charlotte Burchfield.



DEVILETTES: Mary Ann Hammock, Carolyn Sorrels, Sherry McMillion, Mayo Fong, June Downs, Vivian White, Jeanie Fong, Betty Rea Allen, Manager; June Harmon, Ann Harrison, Vernell Quarles, Elizabeth Adams, Martha Beene, Bonnie Tilley, Doris McCollum, Annie Kelley, Jan Doss, Yvonne Hood, Coach Don Meador.



BLUE DEVILS: Harvey Reisman, Kuhron Meurrier, Bobby Medlin, Tommy Beene, Teddy Harrison, Tommy Coldren, Coach James Clark, Melvin Creekmore, John R. Collier, James Smith, Thomas Able, Johnny Collier, Johnny Walton.

Captains Downs, Able and Fong



THE IMPETTES AND THE IMPS

These girls won second in the district tournament.



Co-Captains Bessie Lynn Chamblee and Glenda Griggs and Coach is Mrs. Mary Clark. First row: Frankie Akers, Helen Ford, Charlotte Burchfield, Audrey Cordell, Patricia Permenter and Brenda Griffin. Second row: Theresa Perez, Hing Fong, Fairy Ann Meurrier, Bessie Lynn Chamblee, Glenda Griggs, Willadean Taylor, Ann Cranor, Billye Medlin, Betty Stimpson, Joyce Beene, Barbara Stimpson, Manager Laurel Fong, Coach Mary Clark. Not pictured is Manager Margaret McKenzie.



Captain Robert Little and Coach James Clark. First row: Bobby Henry, Grady Collum, Mimmy McCollum, Bobby Hood, Charles Ed Reeves. Second row: Manager Robert Miller, Calvin Stackhouse, Jerry Christian, Holman Kelley, Jimmy Shull, Lynn Sanders, Robert Little.



ELEMENTARY



SARA BRANDON
Arkansas State
Teachers
MRS. LEWIS
COALTER
MSCW

REDA BROWN
Mississippi State
JO COUCHMAN
HENDRIX

MRS. JAMES CLARK
Arkansas State
Teachers
MRS. J. O. DAVIS
Henderson State
Teachers

JOYCE CLARK
University of Arkansas
MRS. JAMES EDWARDS
Memphis State

FACULTY OF ELEMENTARY SCHOOL



EULETA MURDOCH
George Peabody

PAULINE HENRY
ASTC
IDA TURNAGE
George Peabody

MRS. KERMIT
HINESLEY
ASTC

ETHEL KIMBEL
Arkansas State

MRS. F. R.
MARTIN
University of
Mississippi
WANDA WITHER-
SPOON
ASTC

HELEN TURNER
ASTC

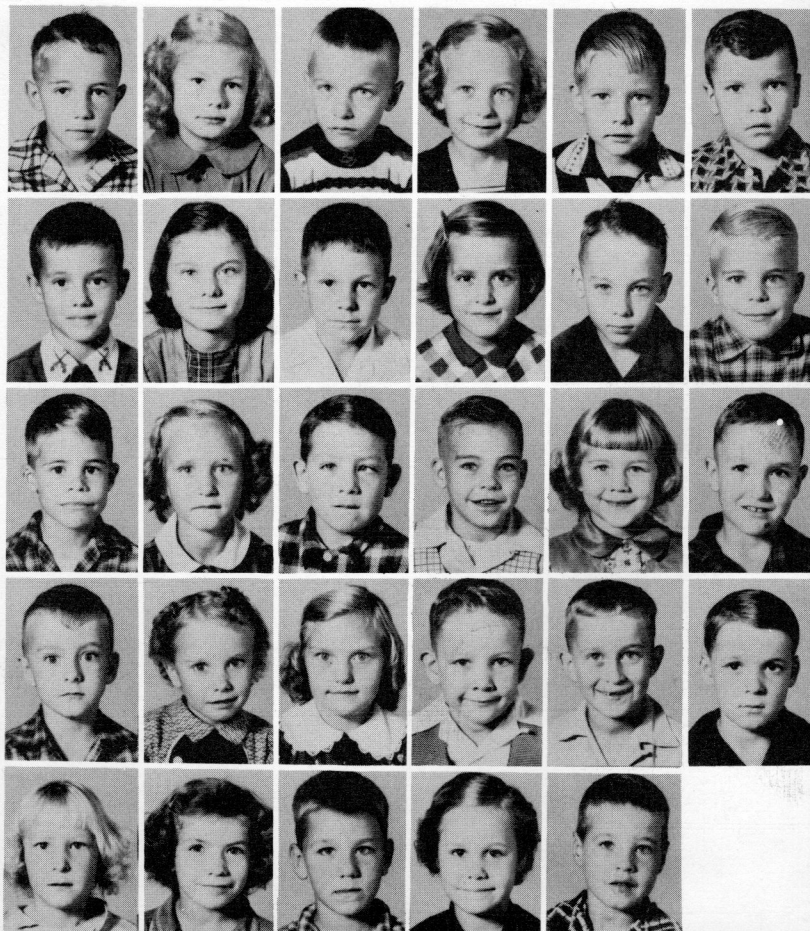
ALMA WILSON
Arkansas State



First row: Bobby Baker, Rickey Beene, Margaret Brent, Marty Brown, Billy Cunningham, Delma Vee Dillahunty. Second row: Jack Dolar, Walter Fowler, Billy Knighton, Catherine Gates, Margaret Griggs, Rheba Griggs. Third row: Carles Hughes, Mary Ellen Lee, Linda Lou Lilly, Brenda Long, Shirley Lyle, Patricia Moise. Fourth row: Barbara Mills, Billy Bob Olive, Sharron Steele, Doris Street, Patsy Taylor, Scott Till. Fifth row: Daryll Trainor, Joe Waggnor, Delores Ward, Mike Watkins, Donna Wood, Alvin Young.

MISS CLARK'S FIRST GRADE

First row: Tommy Ashby, Patsy Ashworth, David Beasley, Mary Crawford, Jewell Ford, Billy Funderburg. Second row: Marvin Griggs, Betty Guin, William Harmon, Linda Howell, Johnny Jenkins, Don Jones. Third row: Jack Jones, Lindy Jones, Tommy Lewis, Al Lofton, Nickie Matthis, James Midget. Fourth row: Sammy Oswalt, Sandra Patterson, Bobbie Ann Russell, Niles Stackhouse, Sanford Steele, Robert Taylor. Fifth row: Patsy Underwood, Patsy Watkins, Keith Wilson, Harriette Wise, Jerry Young.



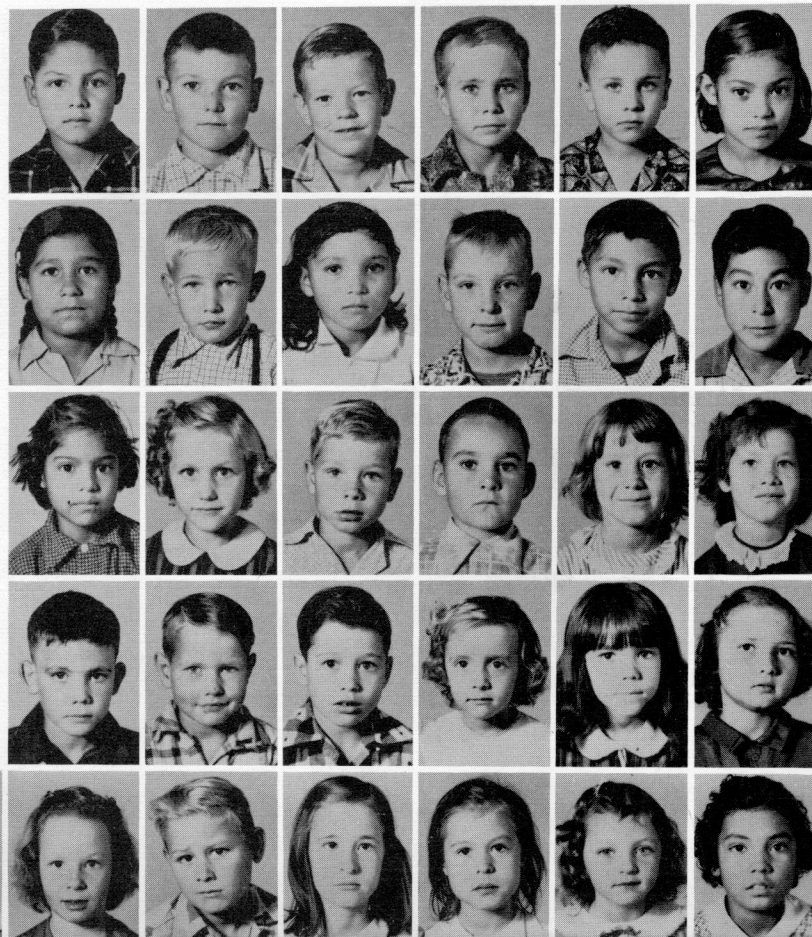
MRS. MARTIN'S FIRST GRADE



First row: Michael Atkisson, Danny Bledsoe, Walter Boles, Glen Brazeal, Glen Brewer, Sherry Casey. Second row: Lela Cox, Sandara Edwards, Judith Ann Ellis, Joyce Gadberry, Edward Gardner, Johnny Gonzales. Third row: Michael Haile, Gary Hubbard, Linda Sue Johnson, Freda Latham, Bedford Little, Rebecca Little, Tony May. Fourth row: Larry McCollum, Mary Francis Morris, Donna Sue Neal, Bernette Prince, Howard Scott, Norman Vanhook, Max Waddle.

MRS. EDWARDS' FIRST GRADE

First row: Ruvy Aboytes, Sidney Campbell, Eddie Copley, Joe Floyd, Toney Fowlkes, Catarina Franco. Second row: Rosaura Frevino, Glen Gardner, Mary Garza, Jackie Gist, Jimmy Gonzalez, Joe Gonzalez. Third row: Linda Gonzalez, Diane Gracey, Terry Hall, Don Carlos Hendrix, Carolyn Hooker, Linda Hughes. Fourth row: Bobby Kidd, Doyle Kimbrell, Danny Kirk, Paulette Lyle, Dorothy Lynaugh, Betty Ann Norris. Fifth row: Moises Rodriquez, Vina Steele, Charles Waddle, Joan Williams, Lucille Williams, Claudette Wysinger, Mary Zamora.



MISS TURNAGE'S SECOND GRADE

First row: Billy Beene, Bob Burch, Geneva Cannon, Mary H. Chamblee, Billy Gene Clark, Joe Cox, Rickey Cupples. Second row: Larry Elliott, Lewis Griggs, Charlotte Haycraft, Nettie Lewis, Jimmy Little, Dickie Lunsford, Paulette McCollum. Third row: Ernest Miller, Gay Anne Morgan, Elizabeth Nickle, Carolyn Parris, Mary Pounds, Jetty Raper, Michael Reisman. Fourth row: Dorothy Sanders, Paulette Spears, Ronnie Sullivan, Bonnie Sykes, Marie Tipton, Meredith Tucker, Carylon Woods.



MISS TURNER'S SECOND GRADE



First row: Bobby Allison, Earlene Bailey, Betty Bayer, Johnny Bayer, Ramona Blanton, Billy Burch. Second row: Larry Counce, Preston Creekmore, Hazel Cummings, Buster Drennan, Mary V. Ford, Billy Fulton. Third row: Alexandro Gonzales, Helen Goacher, Sarah Alice Griggs, Mary Carolyn Henry, Bobby Hughes, Charles Little. Fourth row: Dot McCoy, Susan Pittman, Karen Reidhar, Velma Sue Richards, Janice Steele, Lynn Till. Fifth row: Johnny Watts, David White, Janice Williams, Wayne Williams.

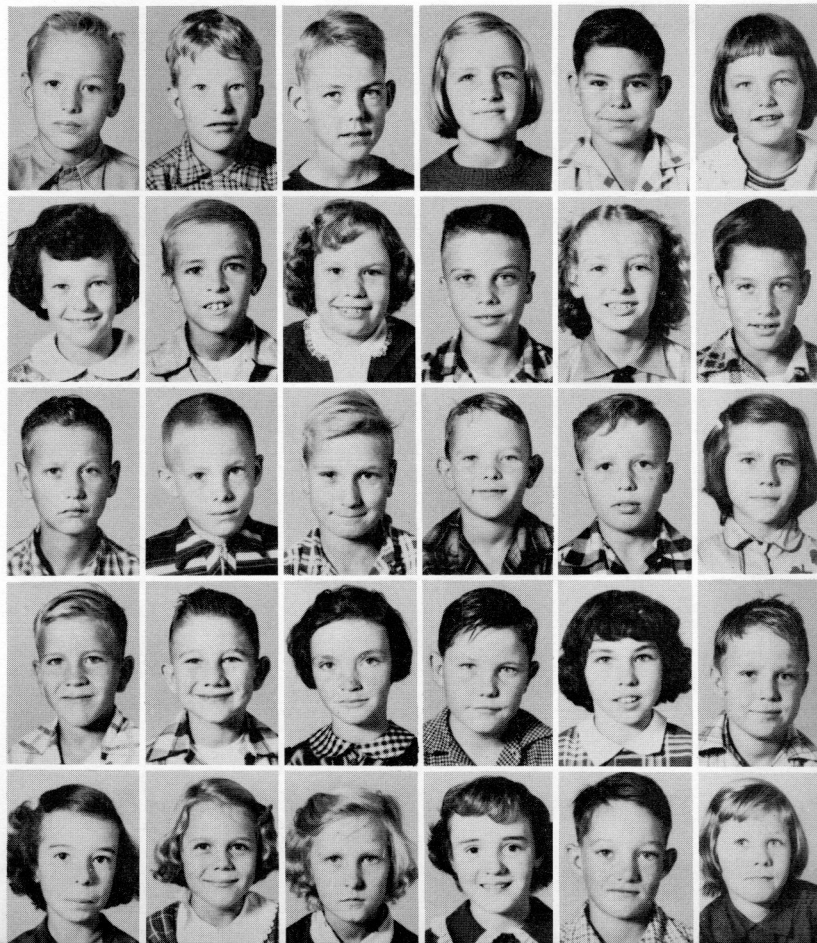


MISS HENRY'S SECOND GRADE

First row: Leonard Alexander, Leonard Baker, Billie Campbell, Jerry Lee Casey, Betty Clark, Jackie Goodman. Second row: Arthur Gracy, La Donn Graham, David Howell, Travis Howell, Billie Hughes, Billy Leverette. Third row: Betty Jo Lyons, Ralph McCain, Verna McHann, Freddie Myers, Robert Rose, Norma Street. Fourth row: Paul Tipton, Judy Lou Vines, Judy Ward, Billie Watkins, Linda White.

MISS BROWN'S THIRD GRADE

First row: Joe Allmon, Jim Bailey, Donald Campbell, Patricia Clark, Sidney Clark, Effie Coleman. Second row: Sonya Copley, Joe Deese, Phyllis Dunlap, Jimmy Edwards, Ethel Ellis, Albert Fields. Third row: Billy Flannigan, Jimmy Ford, George Gates, Paul Hampton, Homer Kirk, Barbara Latham. Sixth row: Bobby Long, Alton Matthis, Paulette McClanahan, Don McElroy, Ruby Moise, Roger Moore. Seventh row: Janice Morris, Jean Murphy, Lois Russell, Barbara Taylor, Bobby Ward, Mary Lee Wilson.

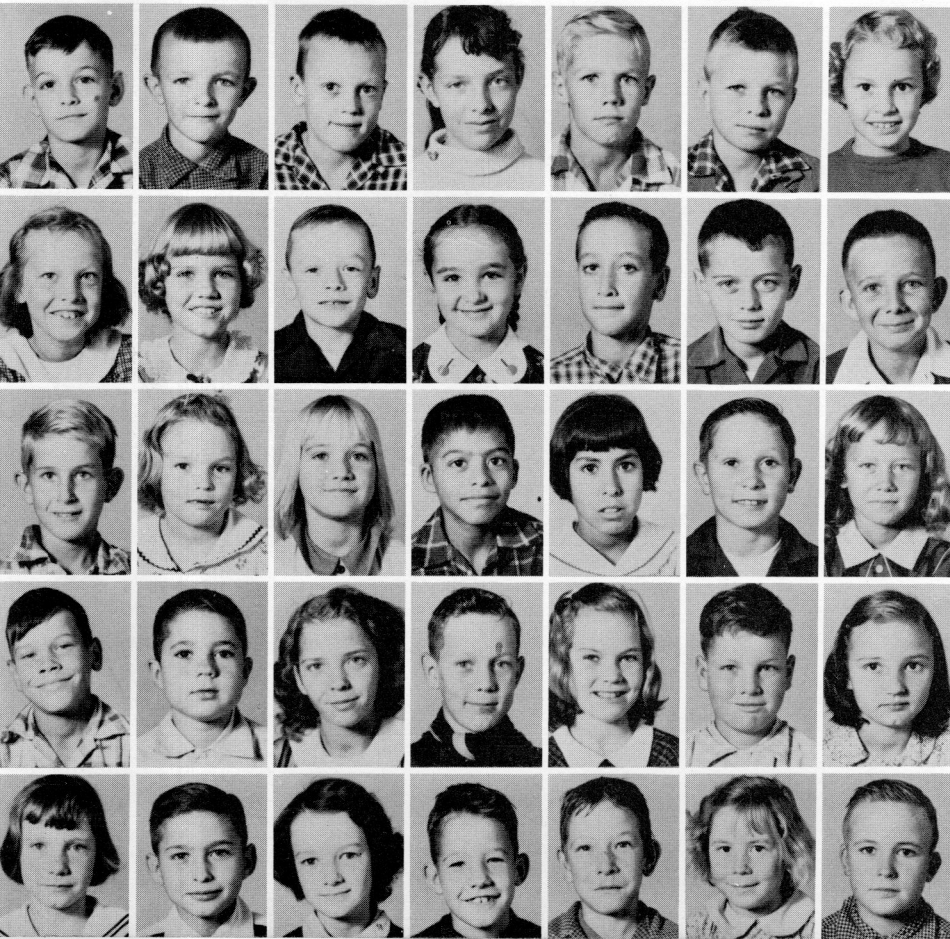


MISS MURDOCH'S THIRD GRADE

First row: Frances Ann Adams, Doris Barrow, Howard Busbin, Laura Caballero, Randall Carey, Alfredo Garza, Doris Goacher. Second row: Johnny Greenwood, Brenda Griggs, Sammy Griggs, Jimmy Hendrix, Betty Lou Hudson, Katherine Kinney, Charlie Lawrence, Glenda Leverette. Third row: C. W. Martin, III; Faye McIntyre, Pat Mills, Carolyn Nelson, Josephine Perez, Michael Reeves, Larry Smith, Johnny Snel. Fourth row: Harold Stimpson, Martha Street, Danny Taylor, Gail Taylor, Joe David Tipton, Raymond Vines, Janice Waggoner, Lloyd Walton.



MRS. COUCHMAN'S THIRD GRADE



First row: Roy Lynn Akers, Gene Altman, Tommy Bailey, Hazel Bateman, Rex Benjamin, Robert Boles, Carol Ann Bonds. Second row: Theresa Campbell, Dottie Cotham, Bozy Crawford, Lynne Davis, Willie Doss, Danny Duvall, Johnny Faulk. Third row: David Felton, Carol Ann Funderburg, Nina Sue Gates, Leroy Gonzales, Mary Gonzales, James Carrol Hall, Shirley Jones. Fourth row: Wayne Kimbrell, Sam Lazenby, Joan Tipton, Audie Malone, Patsy Malone, Allen Markham, Edna May Norris. Fifth row: Jeanne Permenter, James Prince, Wanda Stoddard, Nelson Vanhook, Jimmy Underwood, Carolyn Wright, Wilfred Wright.

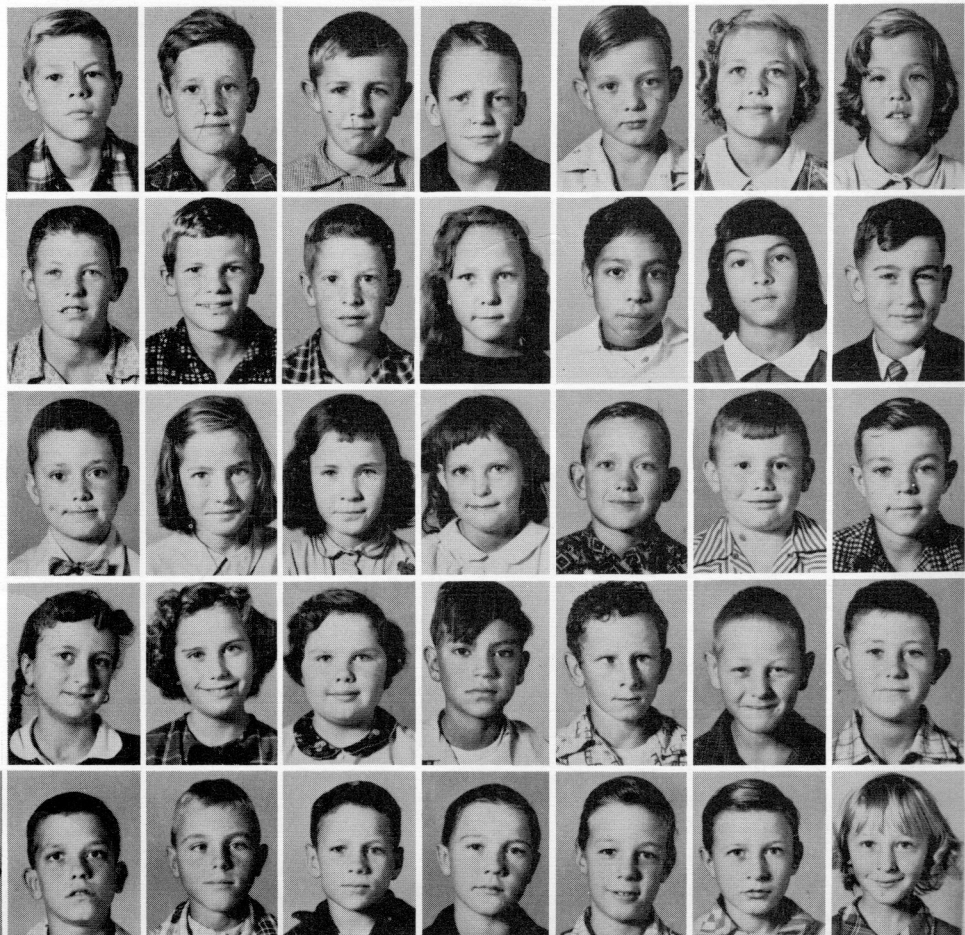
MRS. HINESLEY'S FOURTH GRADE



First row: Robert Allen, Curtis Bledsoe, Patricia Burns, Emogene Clark, Paulette Clark, Bobby Cox, Jack Deese, Sam Dillahunty. Second row: Charles Durham, Tommy Fields, Billy Ford, Yrene Franco, Billy Gadberry, Juanita Gonzales, Barbara Gracy, Ernest Hendrix. Third row: Betty Johnson, Olen Kelley, Bobby Joe Knighton, Martha McCain, Kathy McKenzie, Walter Meals, S. M. Neal, Billy Parris. Fourth row: Lois Pounds, Judy Priest, John Reidhar, Johnny Scott, Connie Sullivan, Diane Tate, L. C. Thompson, Douglas Trainor. Fifth row: Johnny Woods.

MISS WILSON'S FOURTH GRADE

First row: Billy Able, Edward Alexander, Bobby Altman, James Bailey, William Beene, Grace Cary, Ann Christian. Second row: Richard Copley, Jimmy Durham, Dale Flanagan, Wilma Gist, Jacinto Gonzales, Linda Gonzales, Charles Goodman. Third row: Jim Griffin, Bernice Hooker, Ruby Hughes, Barbara Johnson, Clifton Jones, Roger Killingsworth, Jimmy Lynaugh. Fourth row: Tina Marks, Sandra McHann, Linda Merriott, Joe Perez, Lester Scott, Ruben Shidler, Wiliford Spear. Fifth row: Betty Steele, Louis Stimpson, Paul Street, Lowell Taylor, Larry White, Carl Williams, Eugene Williams, Helen Williams.



MRS. KIMBEL'S FIFTH GRADE

First row: Elizabeth Baker, Pat Beene, Charles Bickerstaff, James Boozer, Jerrel Boozer, Bobby Boswell. Second row: Gary Burchfield, Ruby Campbell, Sue Chadwick, Patsy Cofield, Evelyn Counce, Linda Cummings, Bobby Cunningham, Rebecca Glover. Third row: Phillip Guerra, Mary Hale, James Hooker, Freda Howell, Jimmy Jenkins, Shirley Johnson, Bette Jordan, Chrissy Killingsworth. Fourth row: Jack Kimbrell, Joan Lewis, Kathy Marks, Ann Moore, Sammy Nichols, Jerry Patterson, Nancy Pittman, Shirley Raper. Fifth row: Gary Reeves, Porter Sample, Clara Stackhouse, Mary Elizabeth Stoddard, Virginia Taylor, Tommy Vines, J. C. Walton, Eddie White.



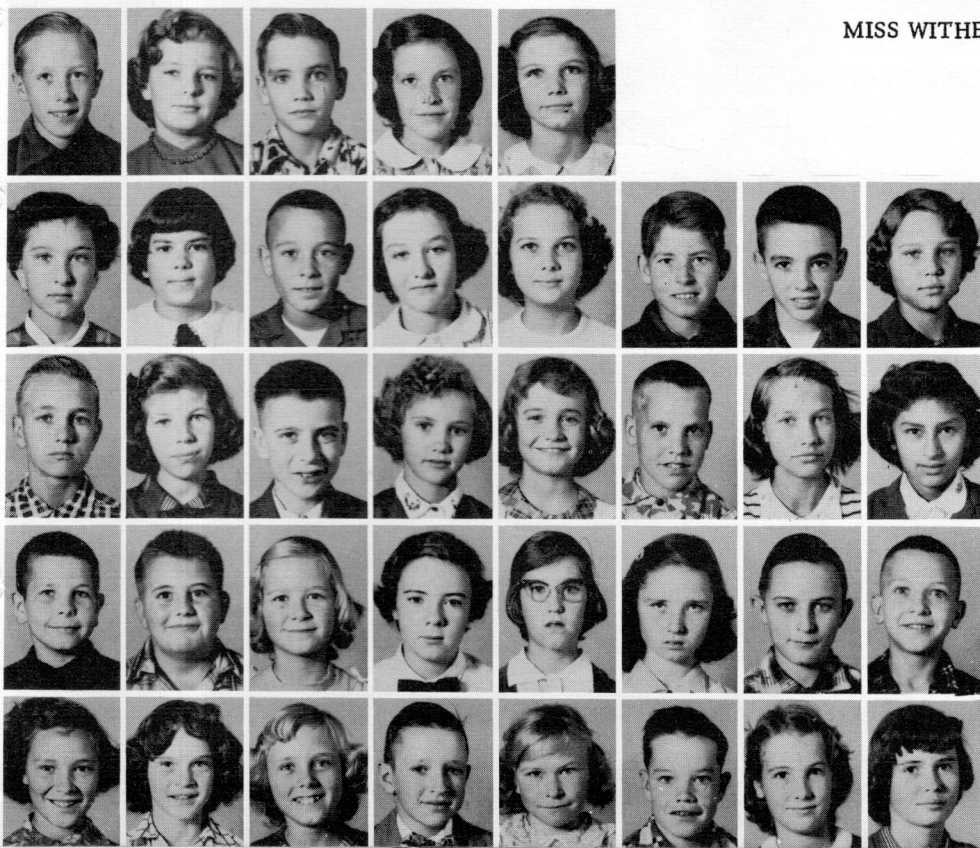
MISS MOSES' FIFTH GRADE



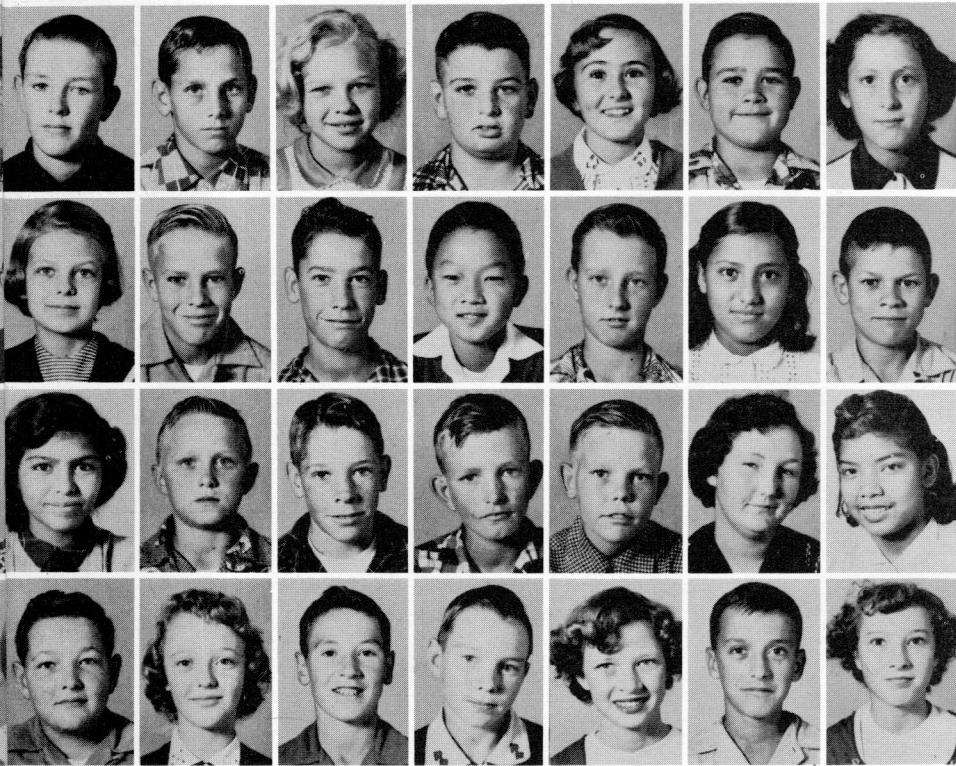
Lucy Aboytes, Margaret Barkley, Morris Barrow, Doris Cherry, Louise Cherry, J. C. Gardner, Olga Gonzales, Alice Kelley, Helen McClanahan, Carol Wysinger.

MISS WITHERSPOON'S FIFTH GRADE

First row: Leon Allison, Sherry Ashworth, Dennis Babb, Lena Mae Bailey, Mary Benjamin. Second row: Patsy Cooke, Martha Cranor, Johnny Cupples, Carolyn Doss, Patricia Edwards, James Feltman, R. H. Franks, Jr.; Donna Faulk. Third row: Robert Gates, Frances Goacher, Sammy Goodman, Joan Gracey, Shirley Griggs, Billy Earl Johnson, Edna Mae Kimbell, Maria Martinez. Fourth row: Jerry McCollum, Earl Miller, Barbara Moore, Sarah Nelson, Julia Nelson, Marie Norris, John Priest, L. C. Ramsey. Fifth row: Pennie Sample, Wilma Stackhouse, Mary Street, Franklin Taylor, Vera Mae Underwood, Bert Ward, Gayle Waugh, Shirley Wright.

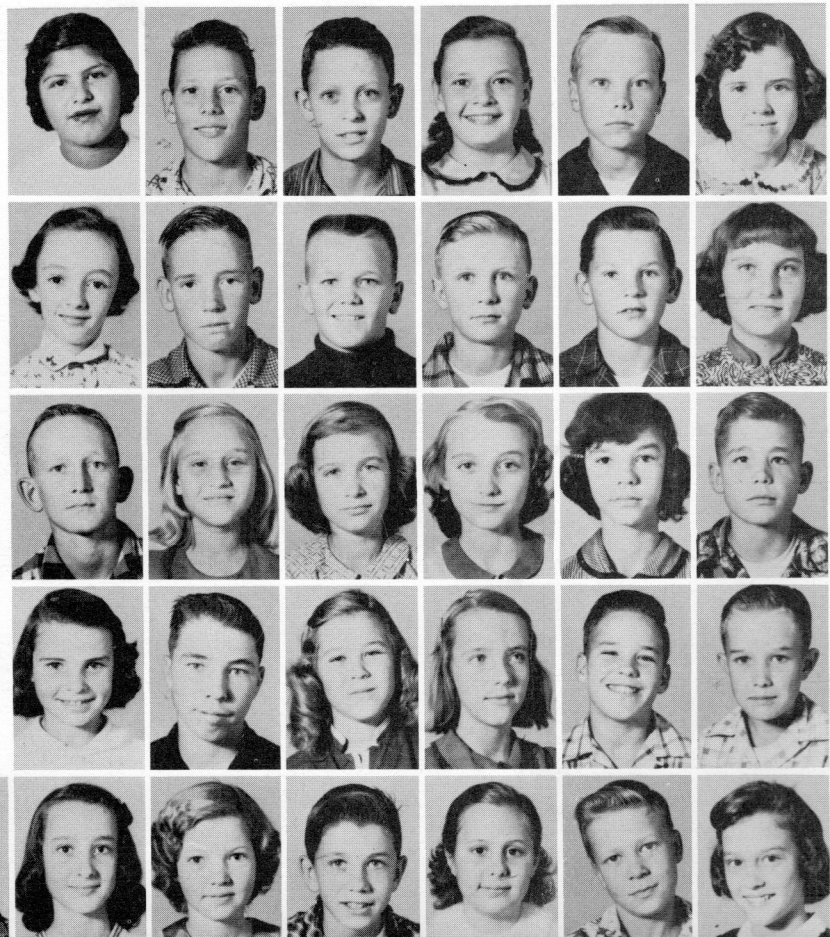


MRS. DAVIS' SIXTH GRADE



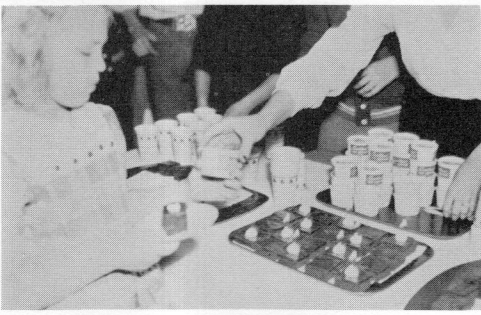
First row: Billy Altman, Cecil Baker, Mary Sue Boles, Bobby Bull, Ruth Ann Chadwick, Larry Chittom, Betty Cox, Second row: Dottie Crawford, Charles Deese, James Flannigan, Ping Fong, John Ed Ford, Gregoria Franco, Jimmy Funderburg, Third row: Betty Gonzalez, Douglas Griggs, Darrel Hall, Jimmy Jones, Roger Kidd, Margaret Midgett, Carrie Moreno. Fourth row: Kenneth McCollum, Betty McCoy, John Parker, Louis Stimpson, Jacky Taylor, Earlene Williams, Maelene Williams.

MRS. COALTER'S SIXTH GRADE



First row: Olivia Aoytes, Johnny Atkinson, Larry Bailey, Mary Ellen Beene, Curtis Col- lum, Carolyn Cotham. Second row: Peggy Crawford, Richard Creekmore, Bobby Downs, Cecil Gracey, John H. Hall, Lucy Hendrix, Third row: Bobby Jones, Shirley Latham, Kathryn Lawrence, Johnnie Lee, Eula Lyn- augh, Harold McClanahan. Fourth row: Linda Mills, Johnny Moise, Maggie Moore, Shearlene Neal, Charles Nelson, Tommy Patterson. Fifth row: Johnny Phillips, Fran- ces Taylor, Nella Ruth Watkins, Larry Wilson, Mary Ann Wise, Timm Woods, Linda Worley.

SCENES FROM OUR CLASSROOMS



Birthday Party



Book Fair



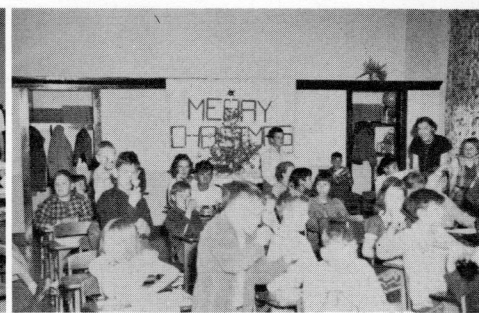
Community Xmas Tree



Clark



Turner



Wilson



Witherspoon



Turnage



Coolter



Couchman



Henry



Brandon



Hinesley

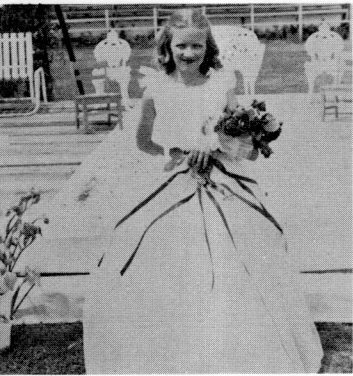


Edwards

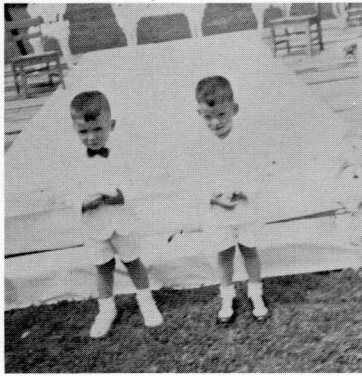


Martin

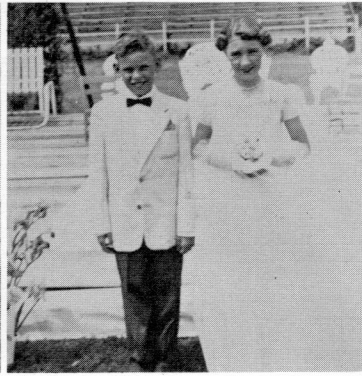
All year we look forward to May Day with its program and royalty.



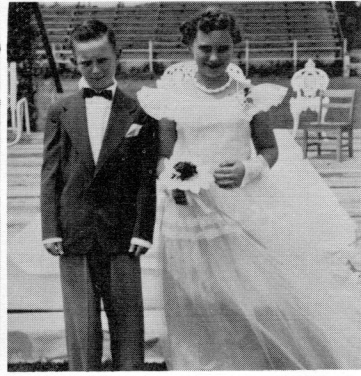
Queen
MARY ELLYN GREEN



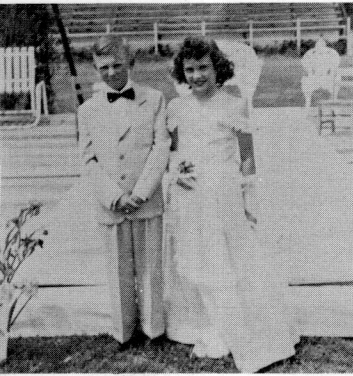
Crownbearers
JIM DAVIS and
JUDSON MARTIN



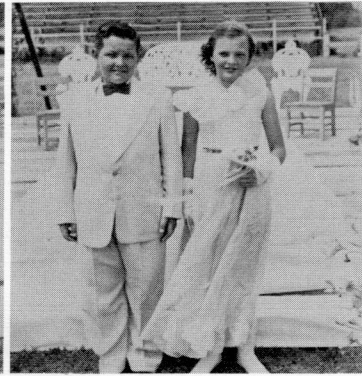
ROLFE MARTIN
NANCY LAZENBY



MICKEY BABB
SHERRIS ANN NIXON



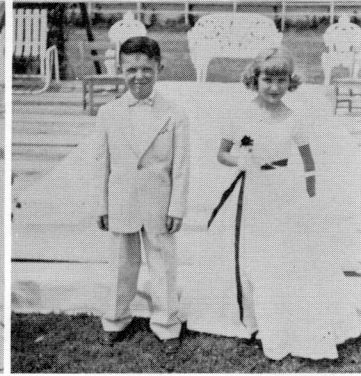
CECIL GRACEY
LINDA WORLEY



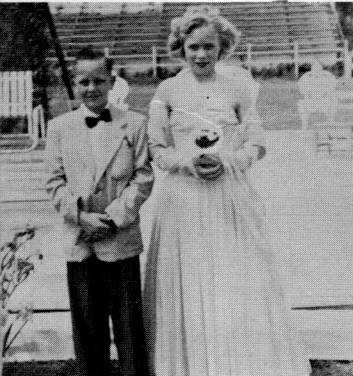
KENNETH McCOLLUM
MARY ELLEN BEENE



PAT BEENE
BETTY JORDAN



BILLY HENRY
JOAN LEWIS



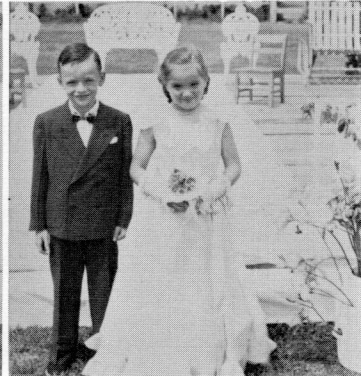
MARY KATE WHATLEY
RICHARD CUPPLES



SAM DILLAHUNTY
HELEN CHANDLER



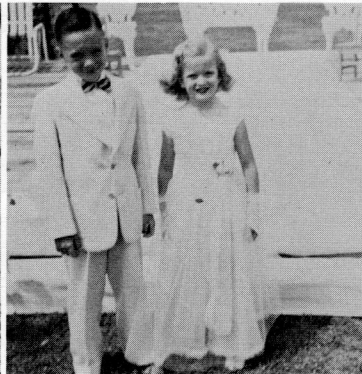
WALTER MEALS
JUDY FERGUSON



BOZY CRAWFORD
LYNNE DAVIS



JIMMY EDWARDS
FRANCES ANN ADAMS



BOB BURCH
BETTY BAYER

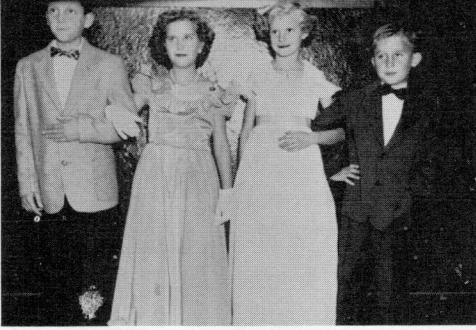
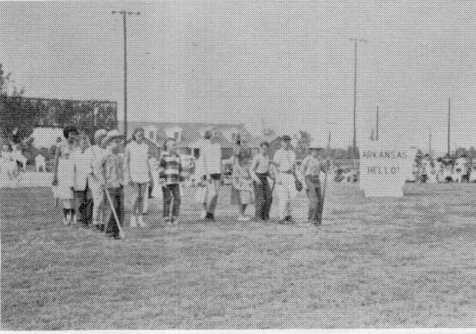
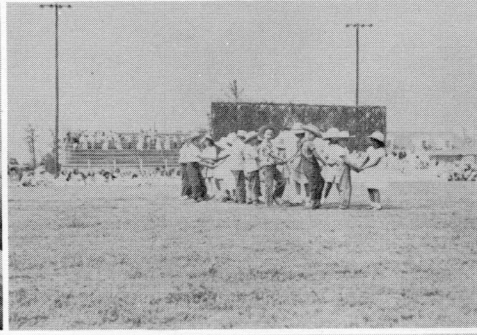


DICKIE LUNSFORD
MARY CAROLYN HENRY



CAROLYN WRIGHT
BILLY PERKINS

Life in the grade school is marked by such events as May Day and Halloween. These are highlights in our school days.



MUSIC OF THE SOUTHLAND was the theme of our May Day. Among the Halloween royalty were Dottie Crawford, Douglas Griggs, Linda Worley, Charles Nelson, Michael Reisman, Meredith Tucker, Robert Rose, Betty Jo Lyons.

THE PUBLISHERS



It is the purpose of the Journalism Class to provide motivated work in written composition, to provide effective training for work on the school newspaper, to publish a school newspaper that will effectively cover the news of the school, and to publish a yearbook that will bring you pleasant memories of Hughes High School many years from now. The yearbook is a pictorial and written account of the school year 1954-55.

GOOD-BYE AND GOOD LUCK

STAFF OF STUDENT PRINTZ



Editor, Ping S. Fong, with Austin Littell, Carolyn Sorrels, Charles Gregg, Mary A. Hammock, Elizabeth Adams, Beverly Tate, Faye Wright, Lanell Hopper, Byron Ashby.

STAFF OF BLUE DEVIL



Editor, Beverly Brown with Raiford Pittman, June Harmon, Charles Gregg, Elizabeth Adams, Shirley Moore and Beverly Tate.

Serving the Arkansas Delta

Griffith

LUMBER COMPANY

Lumber and Building Materials

Phone 14

Hughes, Arkansas

Phone 1335

Madison, Arkansas

Colonial

BAKING
COMPANY

Good Luck to Class of '55

from

**WEBB AND
COMPANY, INC.**

Distributors of

Rath "Black Hawk" Meats

"Delta Queen" Brand Sausages

"Webco" Provisions

Helena, Arkansas

Since 1917



Be Sure to Insure in
Sure Insurance

C. C. Moore

INSURANCE AGENCY

All Types of Insurance

Farm and Home Loans

Phone 28

Hughes, Ark.



Lock's
GROCERY

Fancy Groceries

Meats

Fresh Vegetables

Dry Goods for the Entire Family

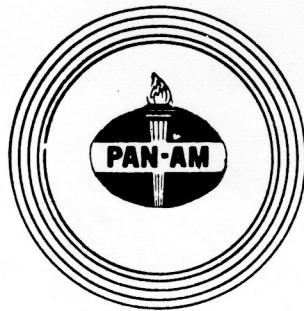
J. W. LOCK

Phone 137

PAN-AM

"Fine as They Come"

Kelby
OIL COMPANY



Quality Products at Cheaper Prices

Where Prices Were Born
and Raised Elsewhere!

Phone 36 or 77

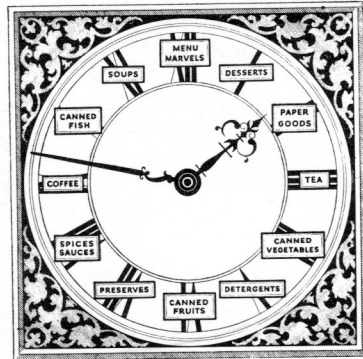
Hughes, Arkansas

Wynne

WHOLESALE
GROCER

Wynne, Ark.

Around the clock
with Sexton



*Every time the clock ticks
Sexton Foods are being served
to pleased guests
with greater profit*

Good
Luck



Whoever you are
whatever you do



BOTTLED UNDER AUTHORITY OF THE COCA-COLA COMPANY BY



Hughes
AUTO COMPANY

Chevrolet Sales and Service

Phone 22

Hughes, Arkansas

Fong's

DEPT. STORE

"Hughes Greatest Store"

CHIC FONG, Owner

We Are for
Hughes School

Mack's

FURN.
AND
APPLIANCE CO.

JOHN'S
PLACE

CAFE TASTEE FREEZE

Hughes, Ark.

Y'ALL COME

Ph. 126



Best Wishes, Seniors

Hughes

IMPLEMENT COMPANY

Parts - Sales - Service

Your International Harvester Dealer

Hughes, Arkansas