

**THE
BLUE BANNER
1942**

THE
BLUE BANNER

PUBLISHED BY
THE SENIOR CLASS
OF
HUGHES HIGH SCHOOL
HUGHES, ARKANSAS

1942

DEDICATION



To our superintendent, Mr. Roy. M. Nelson, through whose tireless efforts the school has reached a higher plane. His guidance and friendship to every student has inspired us to strive onward to our ultimate goal.

FOREWORD

Perhaps within the years to come when every student of Hughes Hi has achieved his eventual goal in life, he may chance to uncover a cherished copy of this collection of forgotten school lore, of once familiar faces, and places frequented long ago. If any material in this book brings back to any student fond memories of his past school life, our feeble efforts will have been well rewarded.

This annual is not the outcome of the work of a few individual students. It has been made possible by the wholehearted cooperation of each student who has contributed his bit--be it great or small. We of the annual staff have only compiled and published this record of your school-life.

We express our sincere appreciation to the members of the faculty whose advice and untiring effort have contributed in making our first annual our best annual. May the senior classes of forthcoming years have the same spirited cooperation.

For ourselves and posterity we give you the Blue Banner. Judge it not too harshly; may age mellow its mistakes and time enhance its worth.

HUGHES HIGH SCHOOL



BOARD OF EDUCATION

R. C. Nickle
President

A. L. Waring
Secretary

S. M. Capps

G. A. McGaugh

C. W. Martin

BLUE BANNER



Madeline Walls
Editor-in-Chief



Billy Mills
Business Manager

STAFF

| | |
|---------------------------------|---------------------|
| Associate Editor----- | Ruth Capps |
| Assistant Business Manager----- | Katherine Compton |
| Sports Editor----- | S. T. Johnson |
| Feature Editor----- | Mamie Lou Henderson |
| | LaVerne Thompson |
| Typists----- | Estelle White |
| | Katherine Compton |
| | Dot Able |
| Advertising Managers----- | Martha Little |
| | Annette Batchelor |
| Circulation Managers----- | Bruce Hopper |
| | Douglas Griggs |
| Art Editor----- | Ruth Capps |
| Snapshot Collector----- | Shirley Beene |
| Production Manager----- | Raymond Flowers |

FACULTY



Roy M. Nelson
Superintendent, B.
A. Erskin; M. A.
University of S.
Carolina.

Burner Bryan
Math, B.S.E. Ark.
State Teachers
Conway, Ark.

Marjorie Durham
English, P.S.E.
State Teachers
Conway, Ark.



Clyde H. Koon
Principal-----
Coach-Science B.
S., The College
of the Ozarks
Clarksville, Ark.



Ruth T. Nelson
Home Ec. B.S.E.
Arkansas State
Teachers, Con-
way, Ark.



Eudora Tibbles
Music B.S.E. Ark.
State, Jonesburo,
Ark.



Howard Schwam
Language--History
B.S. State
Teachers, Memphis,
Tenn.



Bob McKenzie
Agri., B.S.A.
University of
Arkansas



Roberta Igleheart
Librarian-English
A.B., Henderson
State, Ouachita,
Arkadelphia.

Mary Jane Sanders
Commercial---Phy-
sical Ed. M.S.
C.W., Columbus,
Miss. B.S.



SENIORS

S. T. Johnson
 "I like work; it fascinates me. I can sit and look at it for hours."



Madeline Walls
 "Her presence is known by the loudness of her quietness."



Ruth Capps
 "I used to think some nights were for study, but not so now."



Billy Mills
 "All the great men are dying, and I don't feel well myself."



Plummer Wynn
 "Oh! for a thousand tongues!"



Martha Little
 "I don't like to talk to boys-----much."



LaVerne Thompson
 "I'm not bashful, I'm just thinking."



Mamie Lou Henderson
 "Be good and you'll be happy but you'll miss a lot of fun."



SENIORS

Annette Batchelor
 "Hang sorrow, care
 will kill the cat.
 Let's all be merry."



Douglas Griggs
 "I almost had an
 idea but it got
 away."



Raymond Flowers
 "In the field of
 P.F.A. HIS farm
 improves from day
 to day."



Dorothy (Dot) Able
 "A giggle a day
 keeps the gloom
 away."



Estelle White
 "Worry is the least
 of my troubles."



Bruce Hopper
 "He, who invented
 work should have
 finished it."



Katherine Compton
 "My social obliga-
 tions keep me on the
 run."



Shirley Beene
 "Ever present but
 seldom heard."



JUNIOR



Gwenda Dean Tucker



Charles Sims



Martha Pittman



Harry Boswell



Catherine White



Eldon Sims



Marie Brown



Bobby Williamson



Jimmie Flowers



Frances Brown





SOPHOMORE CLASS

Manasco, Reeves, Postor, Clark, Harmon, Arnold, Hatley, Thrasher, Doler, Lyon, Walton, Brent, Johnson, Martin, Baddour, Pilkington, White, Elsberry, Hopper, Zuckerman, Grafton, Boswell, Mealer, Olivares, Davis, Wilson, Sponsor--Mr. McKenzie.

FRESHMAN CLASS

McCollum, Grafton, Burch, Davis, Danner, Ford, Kelly, Flowers, C. Conlee, D. Conlee, Jones, Busby, Flowers, Beck, Little, Hemphill, Garner, Walls, Routh, McGaugh, Ward, Cothran, Beene, Garner, Jenkins, Danner, Sponsor--Mr. Koon.



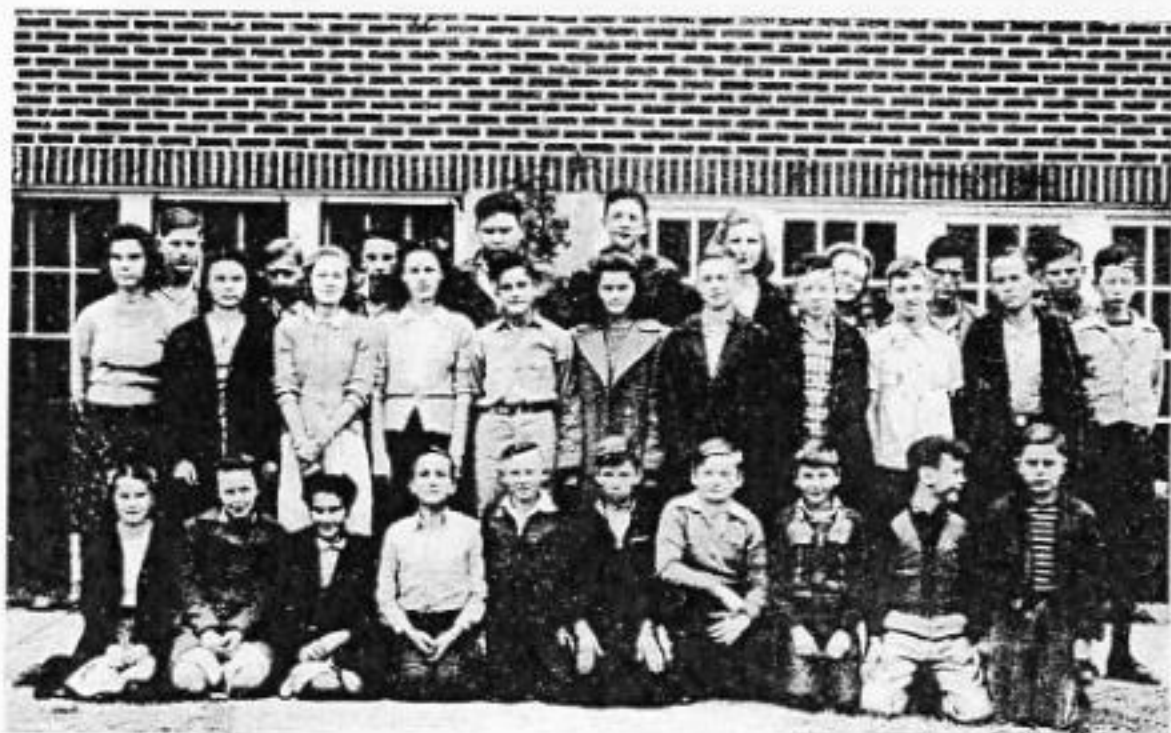


EIGHTH GRADE

Bailey, Foster, Morris, Flowers, McCowan, Mills, Bartee, Ford, Widby, Jones, Olivares, Emmons, Tompkins, McGaugh, Jones, Sims, Madden, Nickle, Barbee, Hopper, Allred, Wynn, Clark, Able, Campbell, Hamilton, Reeves, Smith Duvall, Sponsor--Miss Durham.

SEVENTH GRADE

Leach, Brown, Simpson, Sims, Woodard, Henderson, Hassell, Grammar, Ward, Frazier, Griggs, Routh, B. Boswell, Beasley, McNally, Griffin, C. Beene, Clark, Bickerstaff, Callahan, Bell, R. Pounders, Pruitt, Harmon, E. Beene, Cupples, White, N. Boswell, W. White, J. Pounders, Sponsor--Mrs. Nelson.





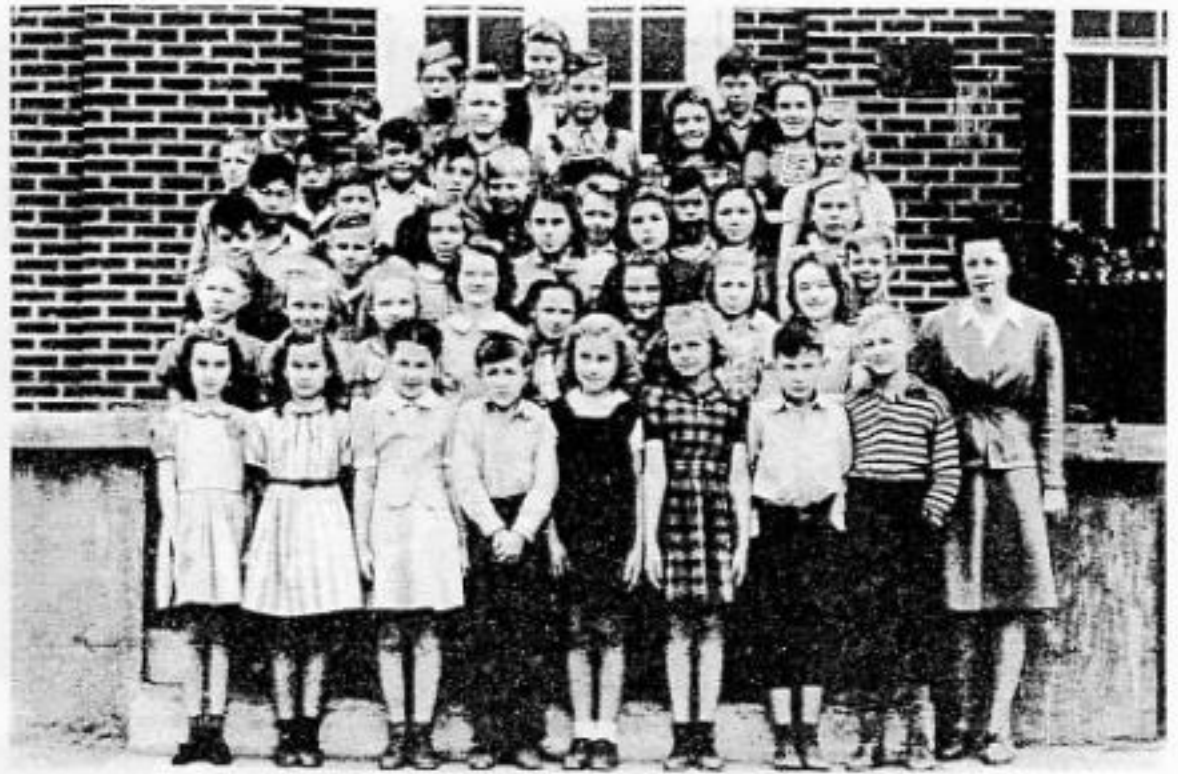
SIXTH GRADE

Morris, Tyer, Perez, Griggs, Carson, Griffith, Lock, Little, Mealer, Batchelor, Thompson, Callahan, Bruce, Benthal, Jones, Walls, Thrasher, Beene, Nickle, Franks, Besley, White, Dodson, Wood, Goacher, Haley, Chu, Burch, Brewer, Oswalt, Heavener, Teacher--Miss McVey.

FIFTH GRADE

Clark, J. White, Hadley, Henderson, Atkins, Hamilton, Bruce, Brown, Akers, White, I. Clark, O. Griggs, Montgomery, Griggs, Bickerstaff, B. Bruce, Young, McFadenn, Allmon, M. Griggs, Sybert, McMillen, Scott, Tynes, Wages, Williams, B. Stoddard, Davis, Hood, Teacher--Harrison.



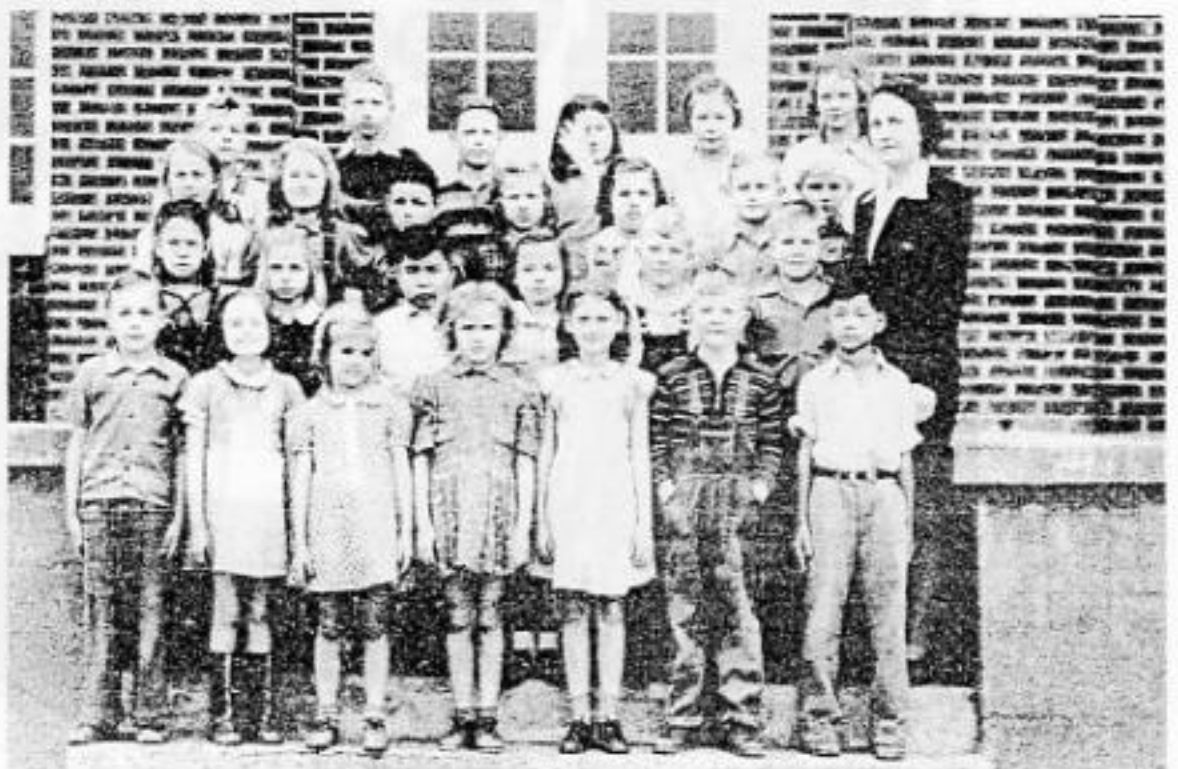


FOURTH GRADE

Jolly, Leach, Ward, T. Ward, Payne, Ford, Sorrels, Stoddard, Davis, Alexander, D. Alexander, Rodgers, Thompson, Raspberry, Woods, J. Stoddard, Goodwin, Brett, Hemphill, Smith, Currie, McClanahaw, M. McClanahaw, Myles, Fong, Grammar, White, Bickerstaff, Collier, Little, Dees, Baird, Lock, Miller, Stoddard, Allmon, Hardy, Engle, Beck Jr., Cannon Jr., King, Howard, McFadden, Teacher--Miss Cater.

THIRD GRADE

Brown, Havner, Deese, Henderson, Hedges, Harris, Fong, Barte, Batchelor, Lock, Miller, Griffith, Bickerstaff, Watney, Clark, Stovall, Smith, McGill, Payne, Mealer, Hampton Jr., McMillen, Moss, Hickman, Baldrige, Howard, Teacher--Miss Gillispie.



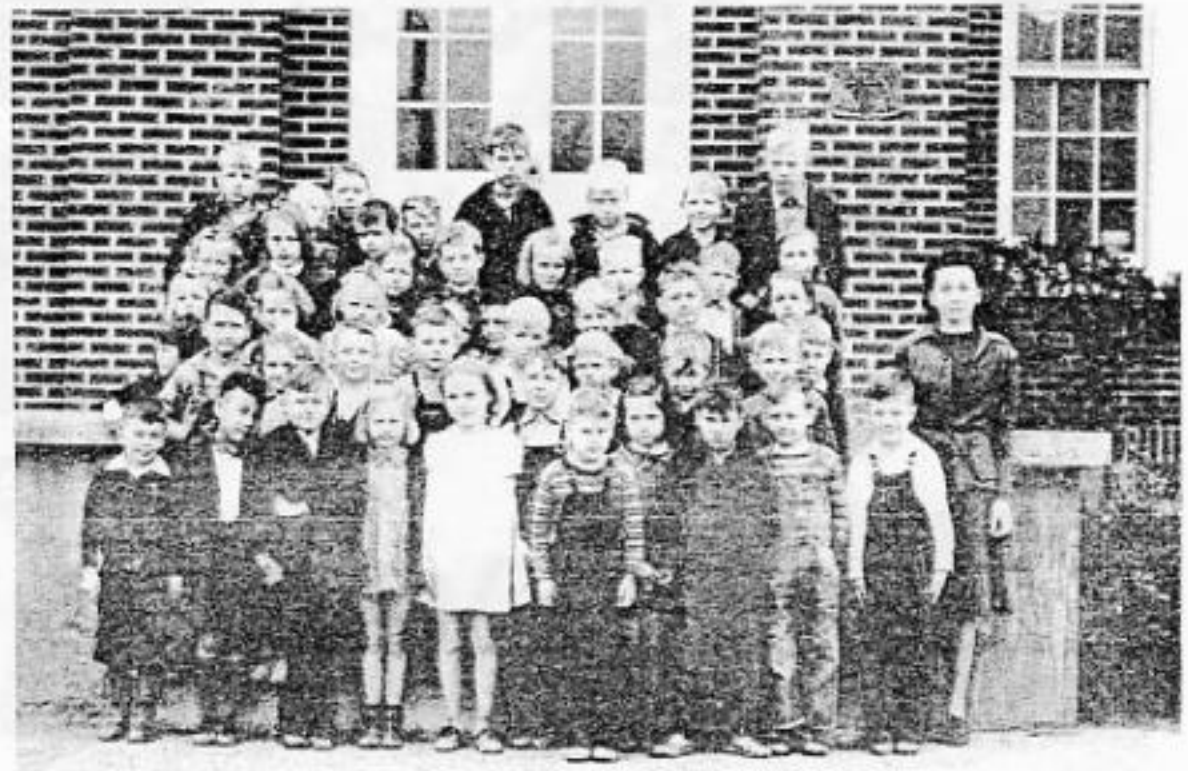


SECOND GRADE

Barbee, Miller, McDonald, Haley, Reisman, Arnold, J. Miller, Oswald, Pouncey, B. Clark, Watts, Bartee, Duvall, Clark, A. Bickerstaff, F. Haley, Causey, Hood, Bickerstaff, Beasley, Hadley, O. White, Medlin, Flanagan, Llanas, D. King, Cupples, Devers, O. Deese, Teacher--Miss Burton.

FIRST GRADE

Kelly, Lock, Clark, Pillar, Cannon, Hughley, Thrasher, Callahan, Collier, Adams, Atkins, Norris Jr., Thompson, Morris, Bickerstaff, Conner, Smith Jr., Goacher, Davis, Rooks, Clark, Whitaker, Cypert, Lindsey, Haley, South, Beville, South, Morris, Finch, J. Morris, Pickle, Rice, Perry, Deese, Flanagan, Little, S. Pickle, Waldorn, King, P. Waldorn, Teacher--Miss Langston.





ACTIVITIES



GLEE CLUB

CLUB



ORCHESTRA



GLEE CLUB



MUSIC CLUB

ORCHES-
TRA





HOME ECONOMICS
CLUB

F. F. A.





Faded text, possibly a name and year.

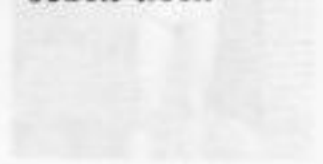
Handwritten mark resembling a stylized 'S' or '3'.



Coach Sanders



Coach Koon



Faded text, possibly a name and year.

Handwritten letter 'P'.



BASKETBALL TEAM

Handwritten mark resembling a stylized 'S' or '3'.



5TH DIST. CHAMPS



S. T. Johnson
All-District



Harry Boswell
All-District



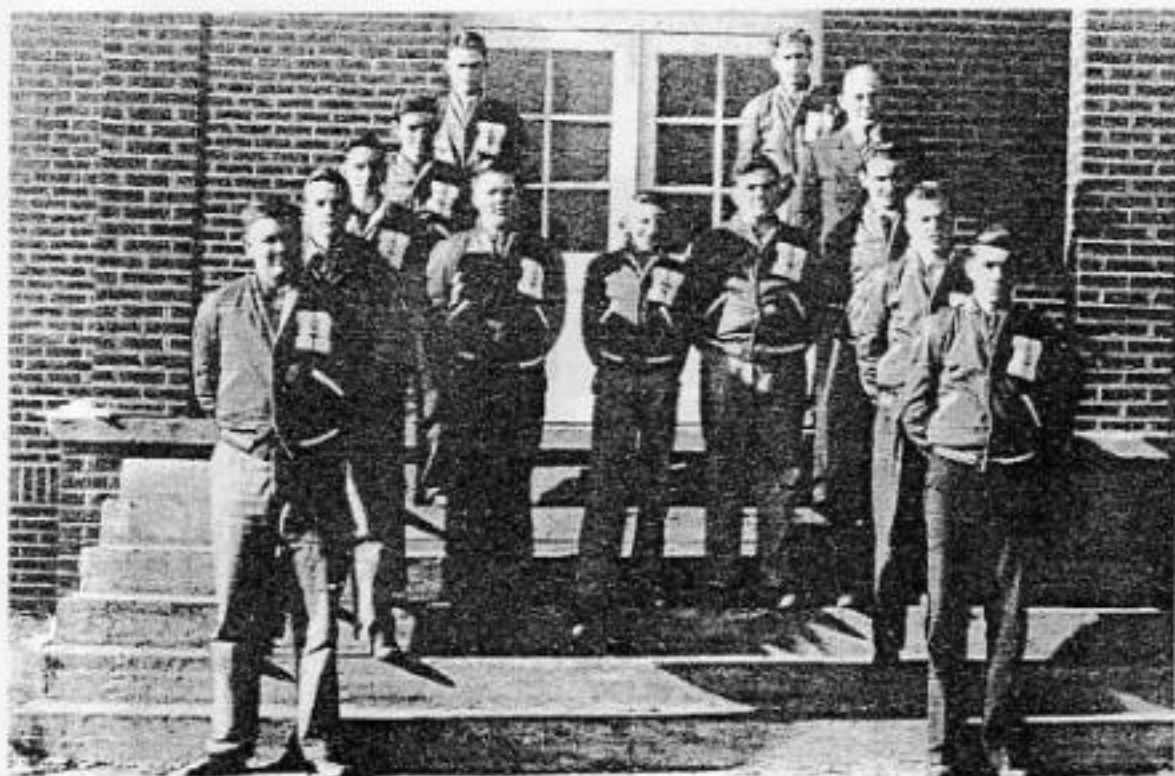
BASKETBALL TEAM





GIRL'S BASKETBALL

"H" CLUB





FOOTBALL SQUAD

GYM



ATHLETIC RECORD

FOOTBALL

| | | | |
|--------|----|-------------|----|
| Hughes | 6 | Stuttgart | 41 |
| Hughes | 33 | Corning | 6 |
| Hughes | 41 | Pocahontas | 0 |
| Hughes | 2 | Marked Tree | 0 |
| Hughes | 25 | Earle | 6 |
| Hughes | 0 | Elaine | 0 |
| Hughes | 57 | Marvel | 7 |
| Hughes | 32 | Marianna | 0 |
| Hughes | 2 | Harrisburg | 0 |
| Hughes | 26 | West Helena | 0 |
| Hughes | 25 | Parkin | 0 |
| Hughes | 0 | Malvern | 14 |

BASKET BALL SCHEDULE

| BOYS | | | | GIRLS | | | |
|--------|----|--------------|----|--------|----|--------------|----|
| Hughes | 25 | Moro | 18 | Hughes | 25 | Moro | 11 |
| Hughes | 32 | Brinkley | 36 | Hughes | 26 | Brinkley | 12 |
| Hughes | 17 | Marianna | 15 | Hughes | 17 | Marianna | 16 |
| Hughes | 35 | Parkin | 27 | Hughes | 15 | Parkin | 11 |
| Hughes | 19 | Forrest City | 26 | Hughes | 13 | Forrest City | 25 |
| Hughes | 17 | Brinkley | 29 | Hughes | 23 | Sacred Heart | 7 |
| Hughes | 21 | Sacred Heart | 29 | Hughes | 40 | Hulbert | 23 |
| Hughes | 36 | Palestine | 25 | Hughes | 24 | West Helena | 16 |
| Hughes | 29 | Marianna | 31 | Hughes | 11 | Parkin | 23 |
| Hughes | 39 | Sacred Heart | 11 | Hughes | 19 | Moro | 11 |
| Hughes | 21 | Hazen | 20 | Hughes | 21 | Hulbert | 16 |
| Hughes | 43 | West Helena | 24 | Hughes | 20 | Parkin | 36 |
| Hughes | 26 | Aubrey | 25 | Hughes | 31 | Palestine | 11 |
| Hughes | 27 | Parkin | 21 | Hughes | 25 | Marianna | 7 |
| Hughes | 33 | Forrest City | 17 | Hughes | 23 | Marvel | 18 |

5th DISTRICT TOURNAMENT

Semi-Finals

| | | | |
|--------|----|-----------|----|
| Hughes | 34 | Parkin | 23 |
| Marvel | 9 | Palestine | 14 |

Finals

| | |
|--------|----|
| Hughes | 21 |
| Parkin | 14 |

FEATURES



Doris Lee Jones
Senior Carnival
Queen



Dorothy Pollard
Football Queen



Sue Capps
Junior Carni-
val Queen

WHO'S WHO



BILLY MILLS

Good Citizenship
 Friendliest
 Most Polite
 Nicest Disposition
 Typical Hughes Student
 Most Likely to Succeed
 Most Talented
 Most Dignified



HARRY BOSWELL

Friendliest
 Most Handsome
 Neatest
 Cutest Smile
 Most Popular
 Best Athlete
 Prettiest Hair



DOROTHY POLLARD

Good Citizenship
 Friendliest
 Most Polite
 Typical Hughes Student
 Most Likely to Succeed
 Best Athlete



RUTH CAPPS

Prettiest
 Neatest
 Nicest Disposition
 Most Dignified



POLLY MARTIN

Most Popular
 Best Personality
 Cutest Smile

WHO'S WHO



P
L
U
M
M
E
R

W
Y
N
N

Best Posture
Most Pep-Appeal



C
H
A
R
L
E
S

S
I
M
S

Best Personality



S
K
I
P
P
E
R

J
O
H
N
S
O
N

Most Pep-Appeal



M
A
R
T
H
A

B
E
C
K

Best Posture



M
A
R
T
H
A

P
I
T
T
M
A
N

Most Talented



J
O
S
E
P
H

Z
U
C
K
E
R
M
A
N

Most Studious



M
A
D
E
L
I
N
E

W
A
L
L
S

Most Studious



D
O
T

A
B
L
E

Prettiest Hair

Boosters

- La Vogue Beauty Shoppe
 Harmon's Euro Station
 Jong's Cash Bro.
 Victor Gaddour
 Fred Gaddour
 Paul Gaddour
 Long Shot Store
 C.B. Smith & Co.
 Harmon & Litter
 Reumann & Son
 N.S. Bingham
 Carl Knapshie
 Kwong Wah Co
 R. J. Ballard
 Ellen's Beauty Shop
 Gordon Gore
 Graham Griffith
 R. B. Davis, Jr.
 C. H. Wise
 Stiles Market
 Doolley
 R. B. Wise
 Charles Gaddour
 M. Zuckerman
 Mary's Bar
 George King
 A. P. Biddy
- Julius Pisman
 City Garage
 Ed Choffin
 Victor's Sandwich Shop, Cafe
 Western Auto Store
 Smith & Smith
 C. B. Nickle
 A. L. Waring
 Mack's Truck Store
 Joe A. Magdovitz
 Max Levy

24 hour service

Carl's Place
 we specialize in
 chicken
 steaks
 fish
 bar-b-q

Blackfish Lake, Ark.

Compliments
 of

Paul R. Kelly

- Comfortable
- Long Wearing
- "Bull Dog" Pockets



OVERALLS & WORK CLOTHES

Just say "AJAX" when you buy overalls
or work clothes — They're tough and sturdy.
You get more for your money when you say "AJAX!"

~~Exclusive Wholesale~~ **Wm. R. Moore's** ~~Memphis, Tennessee~~

C.C. Moore & L. E. Burch
General Insurance
Phone 75
Let us Serve You

National Planters Bank
of Eastern Arkansas
Forrest City Arkansas

COMPLIMENTS
of A
FRIEND

Oswalt

Kerff-Jones Co.
Indianapolis, Indiana
Official Jewelers to Hughes Juniors

Representative

Eldon Johnson

C. H. Martin

Wholesale Groceries

Serving the Delta

Phone 20

Store Your Food in a
Frozen Food Locker
at
Bill Baugh's
Horseshoe Lake

PHONE 8F5

"Food Will Win the War"

A frozen food locker will save your family a great deal each year — and you can help by conserving foods!

Write for details
Frozen Food Lockers
307 So. Front
MEMPHIS, TENN.

Home Lockers — Walk-in coolers —
Complete Locker Plants
Bird Eye Foods